

# Foreign Competition and the Durability of US Firm Investments

Philippe Fromenteau \*

Jan Schymik \*\*

Jan Tscheke \*\*\*

September 2018

## Abstract

How does the exposure to product market competition affect the investment horizon of firms? We study if firms have an incentive to shift investments towards more short-term assets when exposed to tougher competition. Based on a stylized firm investment model, we derive a within-firm estimator using variation across investments with different durabilities. Exploiting the Chinese WTO accession, we estimate the effects of product market competition on the composition of US firm investments. Firms that experienced tougher competition shifted their expenditures towards investments with a shorter durability. This effect is larger for firms with lower total factor productivity.

*Keywords:* import competition, firm investment behavior, investment life-span, short-termism

*JEL classification:* F14, F36, F65, G32, L20, D22

---

\*Ludwig Maximilian University of Munich, philippe.fromenteau@econ.lmu.de

\*\*University of Mannheim, jschymik@mail.uni-mannheim.de

\*\*\*OECD, jan.tscheke@oecd.org

We would like to thank Andrew Bernard, Harald Fadinger, Gabriel Felbermayr, Dalia Marin, Udo Kreickemeier, Georg Schaur, Uwe Sunde, Chad Syverson, Alexander Tarasov, Michael Weber, Joachim Winter, two anonymous referees and various seminar participants at LMU Munich, Mannheim, the Midwest Trade Meetings (Purdue) and the International Economics Workshop Göttingen for helpful comments and suggestions. We are indebted to Elizaveta Filatova for superb research assistance. Financial support from the DFG - CRC TR224 (Schymik) is gratefully acknowledged.

# 1 Introduction

Firms invest in expectation of some future benefits. A vigorous policy debate is in progress over the origins and consequences of short-term corporate behavior: when firms in the economy face short-term incentives and do not invest sufficiently long-term into assets that pay off in distant future, this can be impedimental for economic growth. As short-term investments depreciate earlier, net investments tend to fall and firms need to refinance more frequently.<sup>1</sup> The literature has identified that credit crunches, uncertainty, investor pressures or agency problems can be causal for short-term investment behavior (see Aghion et al. (2010), Garicano and Steinwender (2016), Terry (2015), Garicano and Rayo (2016) and Bénabou and Tirole (2016)). In this article, we put forward another reason for corporate short-termism: we argue that foreign competition can induce firms to distort investments away from assets that pay off in distant future towards short-term assets.

Falling trade barriers leading to a rise in international trade flows are a defining feature of the past century. The associated increase in competitive pressure from abroad can threaten domestic firms and affect their investment behavior. When tougher competition reduces the expectations of future profitability, firms have an incentive to shift investments towards more short-term assets.

To guide our empirical analysis, we provide a simple model. We consider a firm in a two-period economy which engages in two types of investment: a short-term one and a long-term one. Whereas short-term investments reduce production costs today and yield an immediate payoff, investments into more durable assets reduce future production costs and therefore pay off at a later point in time.<sup>2</sup> When tougher competition from abroad reduces the rents on long-term investments, firms are incentivized to shift their investment expenditures towards nondurable investments. To estimate the effect of foreign competition on the investment composition inside firms, we use our model to derive a within-firm difference-in-differences estimator. Our model predicts that within a firm in a given year, tougher foreign competition should lead to a *relatively* larger reduction in long-term investments vis-à-vis short-term investments. Consider for example a firm that chooses between investing into computer equipment or some new machinery where computers depreciate faster than machinery. In the optimum, the firm invests such that the return on the marginal investment are equal for both categories. If competition now reduces profits in the long-run, this diminishes returns on machinery and the firm tilts its investments towards computers.

We use data for the population of stock listed manufacturing firms in the US between 1995 and 2009 and exploit the Chinese WTO accession in 2001 as a natural experiment to study how a change in competition prospects shapes the investment composition inside firms. After China was granted WTO membership in 2001, the US Congress was not anymore in the position to annually ratify tariff rates on Chinese imports. We argue that this abolition of the opportunity to protect US industries led to an increase in the exposure to competition from China, particularly for firms in industries that

---

<sup>1</sup>According to Bureau of Economic Analysis data, there has been a fall in the fraction of net investments in gross investments of US private businesses during the period between 1995 and 2009 suggesting that a larger proportion of gross investments was conducted to replace old capital stock.

<sup>2</sup>The same argument holds when investments increase the perceived-quality of goods instead of reducing production costs.

historically have been protected by high tariffs. Furthermore, firms in US industries that are more low-skill-intensive in their production might also be affected more severely because these industries face comparative disadvantages vis-à-vis Chinese producers. As listed firms disclose investment expenditures across different asset categories which differ in their durability, we can exploit variation in durability across asset groups to distinguish between short- and long-term investments similar to Garicano and Steinwender (2016).<sup>3</sup> With the data at hand, we estimate how changes in the sectoral degree of competition lead to a shift of investments within firms. Based on our sample of listed manufacturing firms, we find that increasing Chinese import competition reduced the most durable investments more than the least durable investments. The estimated economic significance of our estimates compares to the effect that Garicano and Steinwender (2016) estimate for the financial crisis on investment of Spanish firms.<sup>4</sup>

We find this result to be robust to controlling for several alternative channels that could counteract our results. First, the level of import competition could for instance be correlated with developments in the domestic industry. For example, if US industries become more productive over time, this might lead to relatively more long-term investments and a lower level of import competition. Therefore, we control for changes in total factor productivity, capital- and low-skill-intensity of the US manufacturing industries. Second, we find our results to be robust to controlling for foreign inputs, export opportunities or financial frictions and alternative measures of investment lifespans. Lastly, as our estimation is based on the within-firm responses across investment categories, we are able to account for potential alternative firm-specific demand or technology shocks.

As the residual demand is relatively more elastic for less profitable firms, we expect that we observe stronger adjustments of the investment composition to an increase in foreign competition within the less productive firms of each industry. Thus, we expect that firm heterogeneity matters for the relative size of this effect. Consider for example two different firms that choose to invest into computers or machinery, one firm with higher unit costs than the other. Whereas tougher competition shifts up the residual demand price elasticities for both firms at any given demand level, the long-term profits for the firm with higher costs fall more compared to the profits of the firm with lower costs because the high-cost firm charges higher prices and a lower mark-up. Therefore, we expect a stronger shift away from long-term machinery investments inside firms with lower productivity. We investigate this role of firm heterogeneity on investment responses empirically and find support for that prediction. When comparing investment responses across the within-industry TFP distribution, we find that shifts in investments towards less durable assets as a response to foreign competition are more vigorous among low productivity firms.

Generally, this article relates to the literature that analyzes within-firm adjustments to international competition. Bloom et al. (2016), Hashmi (2013) and Gorodnichenko et al. (2010) examine the impact of foreign competition on innovation activities inside firms. Bustos (2011) and Lileva and Trefler (2010)

---

<sup>3</sup>Specifically, we consider seven investment categories which we group according to their durability by means of depreciation rates derived from accounting rules: Advertising expenditures, Computer expenditures, expenditures on R&D, expenditures on Transportation Equipment, expenditures on Machinery, expenditures on Buildings and expenditures on Land.

<sup>4</sup>See section 4 for a deeper discussion of the economic magnitudes.

study how access to foreign markets can induce investments in technology upgrading. Whereas these studies analyze the *absolute* level of firm investments and innovation activities in response to trade liberalization, our focus is on changes in the *composition* of investments within firms with respect to more or less durable assets. Furthermore, the literature on multiproduct firms suggests that the exposure to tougher foreign competition incentivizes firms to shift their product portfolio towards their core products (see e.g. Eckel and Neary (2010), Bernard et al. (2010), Nocke and Yeaple (2014) or Mayer et al. (2014)). While these studies analyze within firm adjustments to competition with respect to the production side of firms, our study considers a within firm adjustment with respect to the capital side of firms.

Furthermore, as investments are inherently a forward-looking factor choice, we also contribute to a growing literature that analyzes how economic conditions affect the beliefs of economic agents and determine firm decisions (see Bachmann et al. (2017), Buchheim and Link (2018), Coibion et al. (2018), Chen et al. (2017) and Gennaioli et al. (2016)). We think that there are at least two channels how the increase in Chinese import competition can affect the durability of investments. First, when the realization of tougher competition lowers profits, firms could expect to become insolvent with a higher probability as suggested by the selection mechanism in models of firm heterogeneity à la Melitz (2003).<sup>5</sup> Second, the expectation of tougher competition in the future might let firms expect lower future price-cost margins and thus a lower return on long-term investments. As both economic mechanisms reduce the expected quasi-rents from durable investments such that competition discourages investments into durable assets, we do not aim to distinguish between them and rather aim to estimate the joint effect of competition.

This article is also related to a nascent literature that studies the impact of international trade on corporate finance. Fresard (2010) finds that large corporate cash holdings lead to systematic future market share gains at the expense of industry rivals when an industry is hit by an import competition shock. Valta (2012) studies how the costs of bank credit respond to foreign competition and finds that firms face higher loan spreads when import competition toughens. Xu (2012) studies the financing response during periods of higher competition and finds that firms reduce their leverage by issuing equity and selling assets to repay debt when experiencing increases in import competition. Whereas previous studies show that credit constraints determine firms' opportunities to participate in exporting (see e.g. Manova (2013), Foley and Manova (2015)), this article studies the impact of foreign competition on the composition of firm investments which affects demand for credit itself.

The remainder of the article is structured as follows. Section 2 presents the theoretical framework, section 3 discusses the competition shock to US producers arising from the Chinese WTO accession, section 4 describes the data, identification and empirical results. Finally, section 5 concludes.

---

<sup>5</sup>Garicano and Steinwender (2016) study this channel empirically in light of a credit crunch.

## 2 Theoretical Framework

To understand the impact of competition on the investment behavior of a firm, we lay out a framework which incorporates the inter-temporal investment decision of a firm with respect to short- and long-term investments. The main goal of the section is to guide our empirical work.

**Demand and Industry Structure** We consider an economy that exists for two time periods  $t \in \{0, 1\}$ . During each period  $t$  the economy is composed of  $L_t$  consumers and firms face linear demand because consumers derive their demand from a linear-quadratic utility function following Melitz and Ottaviano (2008):

$$q_{it} = A_t - \frac{L_t}{\gamma} p_{it}, \quad (1)$$

where the intercept is given by  $A_t \equiv \frac{L_t}{N_t + \gamma} + \frac{N_t}{N_t + \gamma} \frac{L_t}{\gamma} \bar{p}_t$ . The degree of product differentiation is described by  $\gamma$ ,  $N_t$  reflects the number of consumed varieties and  $\bar{p}_t = (1/N_t) \int_{i \in \Omega_t} p_{it} di$  characterizes the average price level in the economy. Tougher competition translates into a lower demand intercept  $A_t$  which implies that firms face a lower demand level  $q_{it}$  for any given price  $p_{it}$ . Linear demand implies an upper price bound  $p_t^{max} = \frac{\gamma}{N_t + \gamma} + \frac{N_t}{N_t + \gamma} \bar{p}_t$  at which a firm's demand is driven to zero. This upper price bound  $p_t^{max}$  is an inverse measure of the toughness of competition. A smaller degree of differentiation  $\gamma$ , a larger mass of competing varieties  $N_t$  or a lower average price level  $\bar{p}_t$  all trigger a decline in the price bound  $p_t^{max}$  such that firms are forced to charge lower prices in order to generate positive demand for their product.<sup>6</sup> Most importantly, firms face a larger price elasticity of demand if they set higher prices or if the intensity of competition in the economy increases.<sup>7</sup>

**Production and Investment Decision** Production occurs at constant returns to scale with marginal costs  $c^*$ . We assume that profit maximizing firms can opt for two types of investment in order to reduce their marginal costs of production  $c^*$ .<sup>8</sup> Short-term investments  $k$  reduce the unit costs of production instantaneously to  $c_0 = c^* - (c^*)^\theta k^{0.5}$  in period 0. Long-term investments  $z$  yield larger productivity gains which however only materialize during the subsequent period 1 and reduce the firm's unit production costs to  $c_1 = c^* - \varphi (c^*)^\theta z^{0.5}$  with  $\varphi > 1$ .<sup>9</sup> Higher levels of investment relate to lower unit costs with decreasing returns to scale.<sup>10</sup> The magnitude of cost reductions however depends on firm productivity  $c^*$  and the parameter  $\theta$ . With  $\theta > 0$  a unit of investment reduces marginal costs to a

<sup>6</sup>A rise in  $\gamma > 0$  implies that the degree of differentiation augments and consumers care more about the distribution of consumption levels across different firms. An alternative isomorphic model leading to a similar linear demand curve is Salop (1979) which assumes that consumers have idiosyncratic preferences for an ideal product.

<sup>7</sup>The price elasticity of demand is given by  $\varepsilon_{it} \equiv |(\partial q_{it} / \partial p_{it}) (p_{it} / q_{it})| = [(p_t^{max} / p_{it}) - 1]^{-1}$ . This stands in contrast to a CES demand where price elasticity is uniquely determined by the level of product differentiation  $\gamma$ .

<sup>8</sup>In the Appendix A, we assume that investments raise perceived-quality and outline an isomorphic model approach that leads to the same estimator as derived here.

<sup>9</sup>The basic set-up of the investment function is akin to Dhingra (2013).

<sup>10</sup>In order for the effective marginal costs  $c$  not to become negative, investments  $k$  and  $z$  are restricted by firm productivity  $c^*$ . This however is no critical assumption as our primary interest is in the composition and not in the absolute level of short- and long-term investments.

larger extent for less productive firms whereas  $\theta < 0$  implies that low cost firms are more efficient in cutting costs. For the sake of simplicity, we assume a unit of short-term investment  $k$  and long-term investment  $z$  are both equally costly and require  $r$  units of labor to finance the investment.

In both periods firms compete in a monopolistically competitive market and take the average price level  $\bar{p}_t$  as well as the number of varieties  $N_t$  as given. This yields profits given by

$$\pi(c_t) = \frac{L_t}{4\gamma} (c_t^D - c_t)^2. \quad (2)$$

If a firm's unit costs are just as high such that it earns zero profits, it is indifferent about remaining in the industry. This firm is characterized by marginal costs of production  $c_t^D$  such that  $p(c_t^D) = c_t^D = p_t^{max}$ . Thus,  $c_t^D$  reflects the intensity of competition in the economy as the threshold incorporates the impact of both, the average price level and the number of firms. A reduction in  $c_t^D$  implies a rise in the toughness of competition, as firms need to exhibit lower costs of production in order to produce profitably. Moreover,  $c_t^D$  integrates the impact of competition on firms' prices, demand and profits. Intuitively, more productive firms with lower  $c_t$  charge lower prices for which reason they generate larger demand and earn higher profits. Beyond that, they face a lower price elasticity of demand which allows them to set higher mark-ups of price over marginal costs.<sup>11</sup> An increase in market size  $L_t$  raises profits whereas more intense competition, reflected by a reduction in  $c_t^D$ , decreases demand and squeezes mark-ups implying that firms loose earnings.

Having explained the basic organization of production, we now turn towards firm investments and the choice between short- and long-term investments. Taking the size of the market  $L_t$  and the level of competition  $c_t^D$  as given, the firm optimizes profits discounted with a factor  $\delta \in (0, 1)$  over time

$$\max_{k,z} \pi(c_0) + (1 - \delta) \pi(c_1) - rk - rz. \quad (3)$$

Determining the first order conditions with respect to short- and long-term investments and solving for the optimal level of  $k$  and  $z$  yields

$$k^{0.5} = \left[ \frac{4\gamma r}{L_0} - (c^*)^{2\theta} \right]^{-1} (c_0^D - c^*) (c^*)^\theta \quad (4a)$$

$$z^{0.5} = \left[ \frac{4\gamma r}{L_1(1-\delta)\varphi} - \varphi (c^*)^{2\theta} \right]^{-1} (c_1^D - c^*) (c^*)^\theta. \quad (4b)$$

From equations (4a) and (4b) it becomes clear that stronger competition (smaller  $c^D$ ) reduces the marginal return of investment and thus diminishes investment volumes. However, we are not interested in the effects on the investment *volume* of firms but want to study the *composition* of investments inside firms. Building ratios of equations (4a) and (4b) and taking logs finally leaves us with the

---

<sup>11</sup>See Appendix A for details.

following expression for the relative composition of short-term and long-term investments  $k$  and  $z$ :

$$\ln(k) - \ln(z) = 2 \left\{ \left[ \ln(c_0^D - c^*) - \ln(c_1^D - c^*) \right] - \left[ \ln\left(\frac{4\gamma r}{L_0} - (c^*)^{2\theta}\right) - \ln\left(\frac{4\gamma r}{L_1(1-\delta)\varphi} - \varphi(c^*)^{2\theta}\right) \right] \right\}. \quad (5)$$

**The Impact of Competition on Investment Composition** We now analyze the effect of competition on the relative composition of short-term and long-term investments. When competition rises ( $c_1^D < c_0^D$ ), firms' profits in period 1 fall which in turn diminishes the value of long-term investments relative to short-term investments. As such, firms have an incentive to adjust their investment composition towards short-lived investments when they expect competition to become tougher in period 1. Figure 1 illustrates the effect. Firms choose the investment composition that equalizes the marginal return of short- and long-term investments.<sup>12</sup> The optimal composition of investments  $(k^*, z^*)$  is therefore given by the intersection of the marginal return of short- ( $MR_k$ ) and long-term investments ( $MR_z$ ). According to our model, an increase in the intensity of competition reduces the return of long-term investments for any level of  $z$  thereby shifting the  $MR_z$ -curve downwards (the dashed curve). A new intersection of both marginal return curves emerges giving rise to a larger fraction of short-term investments and a smaller fraction of long-term investments.

In order to empirically identify the investment distortion created by Chinese competition, we compare the investment composition of a firm expecting an increase in import competition ( $\Delta comp > 0$ ) with the investment composition of a firm expecting no increase in import competition ( $\Delta comp = 0$ ). If the firm expects import competition to increase between period 0 and period 1, relative investments  $[\ln(k) - \ln(z)]^{\Delta comp > 0}$  are given by equation (5). If the level of competition however remains unchanged and  $c_1^D = c_0^D$  it follows that

$$[\ln(k) - \ln(z)]^{\Delta comp = 0} = -2 \left\{ \ln\left(\frac{4\gamma r}{L_0} - (c^*)^{2\theta}\right) - \ln\left(\frac{4\gamma r}{L_1(1-\delta)\varphi} - \varphi(c^*)^{2\theta}\right) \right\}. \quad (6)$$

Hence, with a constant level of competition the relative investments are exclusively determined by market size in both time periods. Subtracting the investment composition in the case with constant competition (6) from the investment composition in the case with increasing competition (5) provides us with the following difference-in-differences equation identifying the shift in the relative composition of investments induced by tougher competition<sup>13</sup>

$$[\ln(k) - \ln(z)]^{\Delta comp > 0} - [\ln(k) - \ln(z)]^{\Delta comp = 0} = \ln(c_0^D - c^*) - \ln(c_1^D - c^*). \quad (7)$$

Summing up, international competition from abroad entails tougher competition in period 1. This lowers firms' market power and profits such that the value of long-term investments relative to short-

<sup>12</sup>If a firm expected a larger return in one type of investment than in the other, the firm would invest more into that investment type. As we assumed decreasing marginal returns, the firm would increase investments until marginal returns are equalized.

<sup>13</sup>Alternatively, taking the first derivative of equation (5) with respect to  $c_1^D$  would also identify the shift in the relative composition of investments induced by a marginal change in competition:  $\frac{\partial \text{eq. (5)}}{\partial c_1^D} = -\frac{2}{c_1^D - c^*} < 0$ .

term investments is reduced. Thus, an increase in import competition incentivizes firms to shift their investment expenditure towards investments characterized by a shorter lifespan. Based on these theoretical considerations we derive the following testable prediction.

**Prediction 1:** *The prospect of tougher import competition increases the amount of short-term relative to long-term investments.*

From our difference-in-differences equation (7) it becomes obvious that the size of the investment shift depends on the parameter  $c^*$ . For less productive firms, the relative loss in profits in period 1 compared to period 0 is more pronounced than for more productive firms. Although all firms lose profits and market power, the relative change in profits across time decreases with firm productivity. Accordingly, this leads to a smaller reduction in the marginal return of long-term investments  $MR_z$  relative to the marginal return of short-term investments  $MR_k$  for more productive firms. Thus, less productive firms with a more elastic residual demand curve shift their composition of investments to a larger extent towards more short-lived investments.<sup>14</sup>

**Prediction 2:** *The prospect of tougher import competition increases the amount of short-term relative to long-term investments more for less productive firms.*

### 3 The Chinese WTO Accession and Product Market Competition in the United States

We exploit a quasi-natural experiment based on the competition effect caused by China's accession to the WTO. The admission of China to the WTO was preceded by a lengthy process of negotiations since China's application for WTO membership status in December 1995. From 1995 onward, multilateral bargaining at WTO level as well as bilateral bargaining between China and individual WTO members paved the way for China's actual admission in 2001. In particular, the Clinton administration played a key role in China's path to WTO accession by negotiating a bilateral trade agreement with the Chinese administration in 1999. This US-China Bilateral WTO Agreement already covered trade liberalization for many industrial goods and eased China's entry to the WTO as China gained the crucial support of the United States in its effort to join the WTO.

We think that the Chinese WTO accession is a useful quasi-natural experiment to test our theory for mainly three reasons. First, Autor et al. (2016) argue that China's comparative advantage in industrial goods implies that China's growth resulted primarily in a large supply shock for manufacturing goods and a large demand shock for raw materials. Given that US imports from China vastly exceeded US exports to China, this suggests that our identification strategy is likely going to capture manufacturing import competition rather than export potential.<sup>15</sup> Furthermore, there was cross-sectoral variation on the magnitude of competition changes due to Chinese entry threats because the level of pre-WTO

---

<sup>14</sup>See the Appendix A for a discussion of the relation between firm productivity and demand elasticity.

<sup>15</sup>Bloom et al. (2016), Iacovone et al. (2013) and Utar (2018) also use the WTO accession of China as a natural experiment for an increase in import competition.



tariffs on Chinese goods varied substantially.<sup>16</sup>

Second, China's accession to the WTO, and the dramatic increase of exports to the world that followed thereafter, was driven mostly by the change in China's internal conditions and not by the rising import demand of receiving countries.<sup>17</sup> As Autor et al. (2013) point out, this interpretation is corroborated by the fact that China had an average annual TFP growth in manufacturing of 8% during that time, compared to only 3.9% for the US. Autor et al. (2016) cite several studies indicating that the prospect of formal WTO accession was a major force stimulating the underlying restructuring of the manufacturing industry. The increasing privatization of public enterprises, the extension of trading rights for private firms, greater access to imported intermediates and a solidification of the MFN status, providing security to Chinese exporters, all helped to foster a new level of productivity growth after 2001. Thus, although China had already been granted most-favored nation status (MFN) during the 80s, the surge in exports significantly accelerated after 2001. This surge can be treated as mostly exogenous to dynamics in the US market which is crucial for identification.<sup>18</sup>

Third, as noted by Pierce and Schott (2016), the change in China's WTO membership status in 2001 can be effectively interpreted as a fundamental competition shock as it ended the possibility of denying China a renewal of the MFN status. Even before China was granted permanent MFN status in 2001, it was subject to the same tariff rates that applied to other member countries. However, according to US law, these tariff rates required annual approval by the US Congress. Pierce and Schott (2016) document that between 1990 and 2001, the average vote in the Congress against renewal of China's MFN status was 38 percent. If China had lost its MFN status, tariff rates would have increased to a much higher non-MFN tariff schedule. After China was granted WTO membership in 2001, the likelihood of higher protectionism due to a sudden increase in tariffs dropped substantially.<sup>19</sup> We argue that this policy change reduced the expected profitability of long-term investments for US firms due to tougher competition from China, as domestic industries effectively had lost the option to fight China's MFN status through Congress.

Besides, Pierce and Schott (2016) and Feng et al. (2017) argue that the WTO accession also reduced the uncertainty related to the extension of China's MFN status. As less uncertainty *ceteris paribus* increases investment horizons, this additional mechanism works against our proposed competition effect that leads to shorter investment horizons.

Figure 2 plots the monthly US newspaper coverage on US-Chinese trade policy together with Chinese import competition over the sample period 1995-2009.<sup>20</sup> The news index depicts the fraction of articles published about China, the WTO or trade policy searching for the terms (*China* OR *Chinese*) AND (*import* OR *WTO* OR *trade policy* OR *World Trade Organization*) in the Nexis newspaper

---

<sup>16</sup>See for example <https://clintonwhitehouse4.archives.gov/textonly/WH/New/WTO-Conf-1999/factsheets/fs-004.html> for an overview of negotiated tariff schedules from the Clinton administration.

<sup>17</sup>Between 2000 and 2007, the low-income country share of US imports almost doubled from 15 to 28%, with China accounting for 89% of this growth. Compare Autor et al. (2013).

<sup>18</sup>See Iacovone et al. (2013) for a similar argument.

<sup>19</sup>Pierce and Schott (2016) also point out that China's WTO membership still led to a substantial reduction in *expected* US imports tariffs on Chinese goods. Interestingly, *actual* tariffs remained relatively stable from the year 2000 onward.

<sup>20</sup>The aggregate monthly import competition from China is obtained from the US Census. It is calculated as imports from China divided by manufacturing sales plus Chinese imports less Chinese exports (all not seasonally adjusted).

database published during 1995 - 2009 in the newspaper outlets New York Times, Washington Post, Wall Street Journal or USA Today. The Figure illustrates that media information regarding a trade integration with China was provided only relatively shortly before the actual WTO accession as our index reaches its peak in the year 2000. However, given that capital decisions are typically associated with some adjustment costs (see e.g. Cooper and Haltiwanger (2006)), this does not necessarily imply that firms instantaneously respond to the policy change in 2000. Finally, import competition from China has been increasing throughout the entire sample period, in particular since the WTO accession in 2001. In this context, the WTO accession in 2001 represents a turning point, followed by particularly strong growth rates.

## 4 Empirical Analysis

### Identification

Equation (7) serves as theoretical guideline to set up our baseline econometric estimation strategy in order to identify the effect of import competition on the composition of firm investments. Based on equation (7) we derive the following difference-in-differences specification where  $I_{isct}$  denotes investments by firm  $i$  in investment category  $c$  at time  $t$ :

$$\ln(I_{isct}) = \beta_0 + \beta_1 \times Post2000_t \times Pre-WTO-Tariff_s \times Depr_c + \mathbf{X}'_{isct}\zeta + \lambda_{c/t} + \lambda_{it} + \varepsilon_{isct}, \quad (8)$$

where  $Depr_c$  reflects the depreciation of an investment category  $c$ . In order to distinguish between long- and short-term investments, we rank each firm's investments into different assets according to their time to payoff (inverse depreciation rate). We follow here the approach suggested by Garicano and Steinwender (2016) and exploit expenditures on Advertising, Computer Equipment, R&D, Transportation Equipment, Machinery Equipment as well as on Buildings and Land. In our specification, the rate of duration follows an ordering where a higher ranking implies a more short-lived investment category. Alternatively, we also use depreciation rates. By taking the natural logarithm of investment expenditures, we exclude zeros from our estimations. However, as we consider the universe of stock listed manufacturing firms, zero investments occur relatively rarely in our data.<sup>21</sup>  $\mathbf{X}'_{isct}$  is a vector of control variables.  $\lambda_{c/t}$  are fixed effects for either investment categories  $c$  or category-year fixed effects  $ct$  and  $\lambda_{it}$  are fixed effects for firm-year combinations which sweep out unobserved firm-specific factors that vary across time and affect the investment decisions of firms. Notably, this includes demand shocks, credit shocks or technology shocks as long as they do not affect short- and long-term investments differently. Identification is therefore based on variation across investment categories *within* a firm for a given year.

Most importantly, in this specification  $\beta_1$  identifies the distortion in the relative composition of firm investments created by tougher competition and reflected in our theoretical model in equation (7).<sup>22</sup>

<sup>21</sup>See Table 2 for the amount of zeros and missing observations in investment categories. Furthermore, we also estimate our empirical models where we use the inverse hyperbolic sine transformation instead of taking logarithms to keep the zeros in the estimation sample.

<sup>22</sup> $\beta_1 = [\ln(k) - \ln(z)]^{\Delta_{comp}>0} - [\ln(k) - \ln(z)]^{\Delta_{comp}=0}$

Following *Prediction 1*, if import competition leads firms to adjust their composition of investments towards short-term investment categories, the coefficient of interest is expected to be positive ( $\beta_1 > 0$ ). We argue that the loss of an opportunity to seize protectionist actions was especially important for industries that were traditionally shielded from foreign competition. Therefore, we use the average US tariff level on Chinese imports by industry during the period *preceding* the WTO accession of China as our treatment variable for affected industries. Technically, this approach is related to Guadalupe and Wulf (2010). Specifically, we use the US effectively applied import tariff *vis-à-vis* China, averaged over the years 1995 to 1999 and specific to firms within US SIC 3 digit industries.  $Post2000_t$  is a dummy variable equal to one for years within the panel which succeed China’s WTO entry.  $Pre-WTO-Tariff_s$  represents the average US tariff level on Chinese imports by industry between 1995 and 1999. The coefficient of interest is the interaction of a post-2000 dummy with the pre-trade-agreement level of tariffs and our proxy for the depreciation of an investment category ( $\beta_1$ ). In our baseline specifications, we restrict our sample period to the years around the WTO accession, either from 1999 to 2003 or from 2000 to 2002. By exploiting the competition effect triggered by China’s WTO accession as a quasi-natural experiment, we aim to provide evidence of capturing a causal and economically significant effect.

Alternatively, we estimate equation (7) using Chinese import competition directly as a regressor:

$$\ln(I_{isct}) = \beta_0 + \beta_2 \times \ln(ImpComp_{st}) \times Depr_c + \mathbf{X}'_{isct}\zeta + \lambda_{c/t} + \lambda_{it} + \varepsilon_{isct}, \quad (9)$$

where  $ImpComp_{st}$  is our proxy for the exposure of Chinese import competition in year  $t$  which varies across US SIC 3 digit industries  $s$  and over time  $t$ .<sup>23</sup> Also here, we expect a positive coefficient of interest  $\beta_2 > 0$ .

As the coefficient estimate  $\beta_2$  might suffer from endogeneity bias, for instance when lower long-term US investments attract more import competition from China, we also estimate (9) where we instrument  $\ln(ImpComp_{st})$  with the interaction between the post-2000 dummy with the pre-trade-agreement level of tariffs used in the empirical models (8).<sup>24</sup>

## Data

We employ data on the population of listed manufacturing firms in the US for the years 1995 - 2009. The firms in our sample are obtained from the CRSP database. We match all CUSIP identifiers in the CRSP database for firms with a primary US SIC industry code between 2000 and 3999 with firm-level information from the Compustat and the Worldscope databases. Overall, we end up with 4,428 stock market listed manufacturing firms in our sample. Table 13 describes the variables and their data sources.

---

<sup>23</sup>We measure import competition from China following Bernard et al. (2006) by  $ImpComp_{st} = \frac{Imp_{st}(CHN)}{Prod_{st} + Imp_{st}(CHN) - Exp_{st}(CHN)}$ .

<sup>24</sup>The specification in (8) can thus be regarded as the reduced form of the IV regression.

**Measuring Firm Investments** We follow the approach suggested by Garicano and Steinwender (2016) and exploit expenditures on Advertising, Computer Equipment, R&D, Transportation Equipment, Machinery Equipment as well as on Buildings and Land. Garicano and Steinwender (2016) assign the following depreciation rates to these investments based on a survey of the accounting literature to proxy for  $Depr_c$ :<sup>25</sup> 60% for Advertising, 30% for Computer Equipment, 20% for R&D, 16% for Transportation Equipment, 12% for Machinery, 3% for Buildings and 0% for Land. Besides using these explicit depreciation rates, we also employ a simple ranking that orders the investments from the most long-term one (Land with a durability rank of 1) to the most short-term one (Advertising with a durability rank of 7). Table 2 and Figure 3 summarize information on the investment data.

**Measuring Foreign Competition from China** We use the US effectively applied import tariff *vis-à-vis* China, averaged over the years 1995 to 1999 and specific to firms within US SIC 3 digit industries. The effectively applied tariff  $Pre-WTO-Tariff_s$  is defined as the lowest available tariff, given by preferential tariffs if existent and MFN tariffs otherwise. Tariff data are measured in ad valorem terms and obtained from the UN Trains database. We measure import competition at the sector level  $s$  for a given year  $t$  following Bernard et al. (2016) by

$$ImpComp_{st} = \frac{Imp_{st}(CHN)}{Prod_{st} + Imp_{st}(CHN) - Exp_{st}(CHN)}, \quad (10)$$

where  $Imp_{st}(CHN)$  and  $Exp_{st}(CHN)$  represent the value of US imports from China and exports to China at the 3 digit US SIC level derived from UN Comtrade data.  $Prod_{st}$  reflects the value of US domestic shipments at the 3 digit US SIC level taken from the NBER CES manufacturing database.

**Sector Level Controls** The investment composition as well as the level of foreign competition might be affected by sector specific attributes. If import competition is primarily traced back to low-wage countries such as China, the factor proportions framework predicts firms in capital or skill intensive sectors to be relatively less affected than their counterparts in labor or low-skill intensive industries. Furthermore, trade exposure might be related to trends in technology adoption which alter the demand for skill and capital and determine sector specific productivity. We therefore use the capital stock per worker and the share of non-production worker wages in total compensation in order to control for capital- and skill-intensity at the sector level. We also control for sector specific productivity using a 5-factor total factor productivity index. The entire set of industry level controls is obtained from the NBER CES manufacturing database.

**Insert Tables 1, 2 and Figure 3 about here**

## Baseline Results

Table 3 presents our main results from estimating equation (8). In panel A we use the simple ordering as our measure of duration. The ordering of categories follows the ordering of depreciation rates and

---

<sup>25</sup>Note that an investment's depreciation rate is the inverse of its time to payoff in years.

ranges from 1 (Land) to 7 (Advertising). Panel B repeats all specifications using absolute depreciation rates from the literature as a measure of duration. By offering two distinct measures we aim to ensure that our results do not hinge on specific assumptions regarding the duration of investments, except for a broad ordering. We will show that our story goes through irrespective of the measure chosen.

When discussing our results, we will focus on the sign of the interaction between the  $Post2000_t$ , the  $Pre-WTO-Tariff_s$  and duration  $Depr_c$ , allowing us to compare how long-term investments react *relative* to short-term investments (both measured in percentage terms), when sector level import competition is increasing. According to *Prediction 1*, if competition induces firms to shift their investments towards less durable categories, we expect our coefficient of interest  $\beta_1$  to be positive. This implies that competition is associated on average with a *relative* shift of investments towards more short-term categories, i.e. categories with a higher rate of depreciation.

All specifications include our measure of interest, firm-year fixed effects, and either category or category-year fixed effects. We correct for clustered standard errors throughout all specifications. We cluster at the 3 digit US SIC industry level, as the treatment in our experimental design is correlated across all firms within the same industry. Abadie et al. (2017) suggest to correct the standard errors by clustering at the treatment cluster level which is a 3 digit US SIC industry, here. Furthermore, this clustering choice corrects for autocorrelation of standard errors at the firm-/investment-/year level. The interaction of  $Post2000_t$  and  $Pre-WTO-Tariff_s$  is sector-year specific and thus absorbed by firm-year fixed effects. Thus, we do not identify the average effect of import competition on investments when including firm-year fixed effects. Similarly, due to the inclusion of category fixed effects, we do not identify the between-category differences in average investments. We include these fixed effects because they allow us to effectively control for alternative channels that otherwise could potentially be confounding our results. The inclusion of firm-year fixed effects will also account for confounding effects at the firm or industry level, as long as the change in investments is uniform across the different types of investment.

**Insert Table 3 about here**

Table 3 shows the results for the two measures of depreciation. Throughout specifications (1) to (3) we consider the more narrow sample window around China’s WTO accession from 2000 to 2002. In specifications (4) to (6) we extend the sample period by two years from 1999 to 2003. In specifications (1) and (4) we include category fixed effects to control for time-invariant differences in investments across categories. The other specifications include category-year fixed effects to swipe out confounding effects that might arise from economy-wide investment trends for any particular category (for instance, Figure 3 suggests that there might be an overall fall in advertising or machinery and an increase in R&D investments).

The degree of foreign competition could also be correlated with developments in the domestic industry. For example, if US industries become more productive over time, this might lead to relatively more long-term investments and a lower level of foreign competition. Therefore, we control for changes in total factor productivity, capital- and low-skill-intensity of the US manufacturing industries by

interacting these time-varying industry controls with our depreciation measure. Columns (3) and (6) are our preferred specifications. Here, we additionally include these interacted industry control variables.

For all specifications, the coefficient of interest  $\beta_1$  is positive and significantly different from zero at the 1% level when we focus on the more narrow sample window and it is positive and significantly different from zero at the 5% level when we consider a wider sample window. This is due to the effect that our coefficient estimates for  $\beta_1$  are a bit larger in the smaller sample window. These estimates imply that the WTO accession of China led to a higher decrease (or lower increase) in long-term investments, compared to short-term investments, and that this effect was more pronounced in sectors that had higher average tariffs during the second half of the 1990s.

**Insert Table 4 about here**

In order to see whether our difference-in-differences estimations with differences in pre-WTO tariff rates capture the effects of actual competition changes, we present results from estimating equation (9), where we use the actual import competition from China instead of the interaction of  $Post2000_t$  and  $Pre-WTO-Tariff_s$ . These estimates are reported in Table 4. Whereas we use the full sample time between 1995 and 2009 in specifications (1) to (3), we restrict ourselves to the smaller sample window from 1999 to 2003 in specifications (4) to (6). Also here, we estimate a positive coefficient of interest  $\beta_2$  and the coefficient estimates are again slightly larger when we focus on a smaller sample period.

In columns (3) and (6), we instrument  $\ln(ImpComp_{st}) \times Depr_c$  with  $Post2000_t \times Pre-WTO-Tariff_s \times Depr_c$ . This allows us to check if our difference-in-differences estimations with differences in pre-WTO tariff rates from Table 3 are indeed picking up a competition effect induced by the Chinese WTO accession. In the first stage, the coefficient of  $Post2000_t \times Pre-WTO-Tariff_s \times Depr_c$  is positive and significant at the 1% level. The F-statistics for Kleibergen-Paap rank tests are between 13.83 and 30.95 depending on the measure of depreciation and the sample window. The estimated coefficient of interest  $\beta_2$  in the IV regressions is significant at the 1% level for the ordering measure of depreciation (Panel A) and it is significant at the 10% level for the depreciation rate (Panel B).

**Insert Figure 4 and Table 5 about here**

Next, we take a closer look at the timing when the adjustment of investments occurs. Although we compared firm investment behavior before 2001 with that from 2001 onward in the difference-in-differences estimations of equation (8) in Table 3, it is a priori not entirely obvious when to expect that firms adjust their investment behavior. On the one hand, firms might face adjustment costs or time to build such that the investment response is observed after an actual competition shock. On the other hand, as investments are a forward looking factor choice and because there already has been substantial newspaper coverage in the end of 1999 (see Figure 2), firms already might have started to react shortly before the actual WTO accession. As we compare pre- and post shock periods more broadly, we would argue that our identification is likely not to hinge on the exact timing of the adjustments. However, we still try to understand when firms react to the competition shock.

To explore empirically when this investment adjustment takes place, we regress a set of year dummies, each one interacted with  $Pre-WTO-Tariff_s \times Depr_c$  on our dependent variable. The estimates are reported in Table 5 and we plot the estimated coefficients of interest for each year between 1997 and 2004 in Figure 4 (the dashed lines correspond to 95% confidence intervals). The estimates from this exercise also suggest that the adjustment takes place in the WTO accession year. Graphically, this is visible from the kink in the curve between the years 2000 and 2001 which is present for either measure of depreciation. Statistically, the null hypothesis that the coefficients for the year 2000 and 2001 are equal can be rejected at the 5% level for both measures of depreciation.

Further note that Figure 4 depicts two dips in the coefficients for the year 2000 and for the year 2004. In particular the smaller coefficient for the year 2000 could be worrisome if our estimates were to be driven by a drop just before treatment (1999 and 2000) and a subsequent return to normal trends after treatment. In order to see if that behavior is driving our results, we reestimated Table 5 and excluded each individual SIC industry once to see which industries were responsible for the pre- and post-treatment dip. We found that the pre-treatment dip largely vanishes when we exclude the following three industries: Cigarettes (211), Dairy Products (202), and Service Industry Machinery (358) (ranked by their effect on the dip). Furthermore, one single industry is largely responsible for the post-treatment dip: Rubber And Plastics Footwear (302). Excluding individual firms from these industries did not remove the dips. It is noteworthy that all these four industries are high-tariff industries. In particular, while the mean tariff rate is 4.4 %, Rubber And Plastics Footwear (302) has the largest ad valorem equivalent tariff in our sample (21.8 %), Cigarettes (211) the second largest (15.6 %), implying that we are potentially dealing with tariff outliers. Since our treatment is a continuous variable, time-variation within high-tariff industries have a relatively large effect on our estimates and Figure 4.

In order to analyze whether we are dealing with outliers, we had a closer look at these specific industries and found that coefficient dips could partly be related to industry-specific regulatory changes that were unrelated to Chinese import competition. In particular, two of those industries, cigarettes and dairy, are regulated under the FDA (Food and Drug Administration) and there have been important industry-specific regulatory changes in 2000 that might have created incentives for firms to invest more long-term. For dairy products, the 1996 FAIR Act was supposed to lower subsidies in the 1990s and the subsidy program was scheduled to be completely eliminated by 1999. However, in 1999 that price support program was extended to the end of 2000 and then again extended to the end of 2001. For the cigarette industry, there has been a Supreme Court case (FDA v. Brown & Williamson Tobacco Corp.) that has been won by the tobacco firms in the year 2000 with the court ruling that Congress had not given the FDA authority over tobacco and tobacco marketing. Both changes in regulation are likely to have created incentives for firms to invest more long-term in 2000 and thus are potentially responsible for the dip.

In order to evaluate if our results are robust to the exclusion of these industries, we replicate our estimates from Table 3 as well as Figure 4 in the Appendix B (see Figure 10 and Table 14). Our coefficient estimates remain in a similar order of magnitude and significant at standard significance levels. As our results do not appear to be driven (exclusively) by these specific industry dynamics, we

return to the full sample for the rest of the article.

## Economic Significance

For our sample of listed manufacturing firms and the time span between 1999 and 2003, we observe a 57.4% increase in Chinese import competition. In order to provide an example of the economic significance of our estimated coefficients, we use this increase in Chinese import competition to calculate the resulting changes in average investment duration for our sample.

In specification (6) of Table 4, we instrumented the actual sectoral change in Chinese import competition with the interaction of pre-WTO tariffs and a post accession dummy. Using that coefficient estimate of 0.582 implies that the increase in Chinese import competition caused a wedge across investments with different durabilities. For example, the least durable investments (advertising) were reduced 17.2% less than the most durable investments (land):

$$\begin{aligned}
 [\ln(I_{adv,03}) - \ln(I_{adv,99})] - [\ln(I_{land,03}) - \ln(I_{land,99})] &= 0.582 \times \ln(1.574) \times (0.6 - 0.0) \\
 &= 0.1584 \\
 &\Leftrightarrow \\
 \frac{I_{adv,03}/I_{adv,99}}{I_{land,03}/I_{land,99}} &= \exp(0.1584) \approx 1.172.
 \end{aligned}$$

The economic magnitude of our estimates is surprisingly similar to the effect that Garicano and Steinwender (2016) find for the financial crisis on investment of Spanish firms. They estimate that the recession led to a 17% difference between the reduction of the most and the least durable investments.

In order to study what these wedges across investment categories imply for the average effect of the Chinese WTO accession, we consider the counterfactual situation where land investments are inelastic to competition changes and apply our coefficient estimates for the distortions across the other categories for a representative firm. By doing this, we can calculate how much the average durability of investments decreases in response to a competition shock. Using our IV coefficient estimate of 0.582, we find that the average increase in Chinese competition decreases the investment durability by 66 days. Presuming a refinancing interest rate of 3% per annum, this would impose an additional interest cost of \$5.42 for each \$ 1,000 invested.<sup>26</sup>

Another possibility to assess the economic significance of our estimates is to compare two hypothetical firms with different tariff exposures based on the estimates in Table 3. Consider one firm in an industry with low pre-WTO tariffs at the 25th percentile of the tariff distribution (ad valorem tariff rate of 1.914%) and another firm in an industry with high pre-WTO tariffs at the 75th percentile of the tariff distribution (ad valorem tariff rate of 3.786%). Based on the difference-in-differences estimates in specification (4), Panel B we can calculate how the competition-induced wedge between long- and short-term investments differs across those two firms. Our estimates suggest that the Chinese WTO accession caused a 7.5% larger wedge between the most and least durable investments for the high-tariff

---

<sup>26</sup>See the Appendix B for details on the calculation of effects.



firm compared to the low-tariff firm.<sup>27</sup>

## Firm Heterogeneity

In our theoretical framework we show that the import competition effect on investment composition should be less pronounced for more productive firms. These firms can charge larger markups and face less elastic residual demand. In Table 6, we confront *Prediction 2* with the data. We estimate each firm's total factor productivity and rank the estimated productivities within each industry into five quintile bins. We re-estimate the empirical model (9) but additionally interact  $\ln(ImpComp_{st}) \times Depr_c$  with a dummy indicator for each productivity bin ( $Q_i, i = 1, \dots, 5$ ). If the adjustment towards short-term investments is more pronounced in less productive firms as suggested by *Prediction 2*, we expect a larger coefficient of interest for lower productivity quintiles.

**Insert Figure 5 and Table 6 about here**

We report the coefficient estimates in Table 6. More illustratively, Figure 5 plots the estimated coefficient of interest by TFP quintile (again, the dashed lines correspond to 95% confidence intervals). Specification (1) and the two graphs on the left hand side of Figure 5 show the heterogeneous effects from OLS estimation. We focus on the sample period 1999 - 2003 and include category and firm-year fixed effects. We find a clean ordering of our coefficients of interest by TFP quintile, no matter which measure of depreciation we consider. For firms in the top TFP quintile of our sample our estimates are even insignificantly different from zero whereas for those firms in the bottom two quintiles they turn out positive and significant at the 1% level. The null hypothesis that the coefficients for the top and bottom quintiles are identical is rejected at the 5% level in both estimations (p-value 0.016 in Panel A and  $< 0.001$  in Panel B). Furthermore, the null hypothesis that the coefficients are identical throughout all five quintiles is rejected at 1% level in Panel B (p-value 0.004) but cannot be credibly rejected in Panel A (p-value 0.137).

In order to further assess the robustness of the heterogeneous results, we estimate the same empirical model with the instrumental variable  $Q_i \times Post2000_t \times Pre-WTO-Tariff_s \times Depr_c$  for  $Q_i \times \ln(ImpComp_{st}) \times Depr_c$ . Due to the five endogenous regressors and five first stage regressions, these estimates in specification (2) are likely to suffer from some bias due to the weak instrumentation problem. This is also suggested by the rather small overall first stage F-statistics for Kleibergen-Paap rank tests of 3.343 and 2.843. Nevertheless, we test the null hypothesis that the coefficients for the top and bottom quintiles are identical. Again, this null hypothesis can be rejected at the 5% level (p-value 0.004 in Panel A and 0.026 in Panel B). Furthermore, also the null hypothesis that the coefficients are identical throughout all five quintiles is rejected in Panel B (p-value 0.04) but not in Panel A (p-value 0.146).

**Insert Figure 6 and Table 7 about here**

---

<sup>27</sup>Again, we refer to Appendix B for details on the calculation.

We also estimate the difference-in-differences model (8) and additionally interact the coefficients for  $Post2000_t \times Pre-WTO-Tariff_s \times Depr_c$  and its subinteractions with the dummies for each productivity quintile  $Q_i$ . The estimates are reported in Table 7. Figure 6 plots the coefficients of interest by TFP quintile. Also in the difference-in-differences we find support for heterogeneous results across the productivity distribution. Here, the coefficient of interest is only significant at the 1% level for firms in the lowest TFP quintile and even becomes negative for firms in the top TFP quintile. The null hypothesis that the coefficients for the top and bottom quintiles are identical is rejected at the 5% level for both measures of depreciation (p-value 0.012 for the ordering measure and 0.005 for the depreciation rate measure). The null hypothesis that the coefficients are identical throughout all five quintiles is again only rejected for the depreciation rate measure at the 5% level (p-value 0.049). Overall, we interpret these results as evidence for heterogeneous effects of competition on firm investments in line with *Prediction 2*.

## Robustness and Alternative Channels

In this subsection, we assess the robustness of our estimates and study alternative channels that could affect our results. First, we present an alternative difference-in-differences estimation based on industry differences in comparative advantage where we use variation in industry-specific low-skill-intensity instead of tariff rates. Then we study if our results hinge on the specific ordering of investment categories. Next, we study how missing observations and the treatment of zero investments affect our results. Lastly, we also analyze the robustness of our estimates when we control for different channels of trade liberalization (such as market access or intermediate imports) or financial frictions.

**Insert Figure 7 and Tables 8 - 12 about here**

In Table 8 we reestimate our within-firm estimator and use differences in the average low-skill-intensity of US industries instead of differences in the  $Pre-WTO-Tariff_s$  across industries. We vary between sample windows (either 2000 - 2002 or 1999 - 2003), category or category-year fixed effects and including industry controls interacted with  $Depr_c$  or excluding them throughout the specifications (1) to (4). The idea behind this exercise is that firms in industries that face a comparative disadvantage vis-à-vis Chinese producers experience a relatively stronger competition shock due to the Chinese WTO accession. As China is a labor-abundant economy, we exploit the average low-skill-intensity during 1995 - 1999. Identical to the low-skill-intensity in the industry control variables, we define low-skill-intensity as the share of compensation for non-production workers in total compensation (from the NBER CES database). However,  $Low - Skill - Intensity_s$  is time invariant here because it is computed as the simple industry average over the years 1995-1999, analogous to the pre-WTO tariff rates.<sup>28</sup> Also here, we estimate a positive coefficient of interest  $\beta_1$  throughout all specifications in line with *Prediction 1*. Whereas the coefficient estimates are significant at the 1% in Panel A, they are significant at either the 1% or 5% level in Panel B.

---

<sup>28</sup>According to the WIOD socio-economic accounts, the average low-skill-intensity during 1995 - 1999 was 58.5% in China and 6.2% in the US, defined as the share of low-skilled labor in total labor compensation where low-skilled labor includes workers with primary or lower secondary education.

Next, we analyze how strong our results hinge on the assumed ordering of investment categories in terms of depreciation rates. First, we estimate the effects separately by investment category by interacting a dummy for each category with  $\ln(\text{ImpComp}_{st})$ . Table 9 shows the coefficient estimates from these estimates (specification (1) reports OLS estimates, specification (2) reports IV estimates) and Figure 7 plots them graphically. The omitted category is advertising, such that the estimates should be treated as relative to the most short-term investment category. Broadly, our assumed ordering of investment categories corresponds to the estimated magnitudes here. Additionally, we omit and regroup various categories for the ordered measure of depreciation in Table 10. Specification (1) repeats specification (2) from Table 4 as a baseline regression for comparison. In specification (2) we omit R&D investments in order to see whether R&D expenses are driving our result. For example, a rise in import competition might lead firms to foster innovation by investing more heavily in research activities.<sup>29</sup> This decision is independent of the duration of R&D investments, but would still render our coefficient positive because R&D expenditures just happen to be classified as relatively short-term. Omitting R&D investments reduces the number of observations by more than a quarter but the size of our coefficient remains fairly constant (0.0213 instead of 0.0209) and significant at the 5% level indicating that R&D is not the (only) driver of our results. In specification (3) we further omit investments in Advertising. Because different from the other categories, both R&D and Advertising expenses are taken from the income statements rather than being derived from asset data, one concern is that our results are due to these constructional differences. The results in specification (3) show that our results go through when restricting the sample to asset data. Specification (4) omits Transportation and Computer investments. Computer investments are reported only for the years 1999 and onward and Transportation is reported very little over the full range of years. Accordingly, these two categories might not be very representative and specifically prone to be affected by outliers. But again, our results remain robust when estimating the equation for the remaining categories. Specification (5) omits Land and Building investments as these are investment categories for which prices are very sensitive to market shocks.<sup>30</sup> Therefore, it is not clear whether price changes or quantity changes trigger a change in that investment category and we exclude those categories. However, our coefficient remains significantly positive and increases in magnitude. As estimates of depreciation rates vary in the literature, we regroup assets that are close to each other into single categories in specifications (6) to (9). In specification (6), we assign the same rank to Land, Buildings and Machinery. R&D and Computer investments are grouped into another category. The coefficient increases in size and remains significant at the 10% level. Adding Transportation to the group of long-term investments in specification (7) further increases the coefficient, confirming that switching from one rank to another now has a higher impact on investment durability. Because the depreciation rate of Transportation is relatively close also to R&D and Computer investments, specification (8) assigns it into one group with these categories. Our results are not significantly altered. Finally, it could be that firms increase research expenditures in order to remain competitive in the future, rendering R&D effectively a long-term investment. Then our ranking of investment categories would

---

<sup>29</sup>Bloom et al. (2016) show that Chinese import competition increases technical change within firms, among other things, by increasing the amount of R&D.

<sup>30</sup>Consider for example the subprime crisis as an extreme example for such a market shock.

be flawed. Specification (9) therefore ranks R&D as the most long-term investment. Our coefficient estimate is smaller than in specification (1) but remains significant at the 10% level. We conclude that our original ordering is more coherent, given that R&D investments are not the sole driver of our results.

Next, we try to rule out some alternative stories in Table 11 that relate to other channels of trade liberalization or financial constraints that firms face and that might affect our results. In specifications (1) and (2), we additionally control for the effects arising from a larger supply of foreign inputs from China ( $\ln(\text{Offshoring}_{st})$ ) and larger export markets ( $\ln(\text{ExpMarket}_{st})$ ). We investigate the effect of offshoring by adapting the offshoring measure suggested by Feenstra and Hanson (1999), which uses the input-output tables to measure for each industry the share of input industries. Specifically, our proxy for offshoring from China is  $\text{Offshoring}_{st} = \frac{\text{ImpInputs}_{st}(\text{CHN})}{\text{Prod}_{st} + \text{ImpInputs}_{st}(\text{CHN}) - \text{Exp}_{st}(\text{CHN})}$ , where  $\text{ImpInputs}_{st}$  are the imported Chinese inputs by industry  $s$  in year  $t$  and constructed as proposed by Feenstra and Hanson (1999) using input-output tables from the U.S. Bureau of Economic Analysis. Additionally, we include  $\text{ExpMarket}_{st} = \frac{\text{Exp}_{st}(\text{CHN})}{\text{Prod}_{st} + \text{Imp}_{st}(\text{CHN}) - \text{Exp}_{st}(\text{CHN})}$  to control for increases in market size induced by the Chinese WTO accession. As one would expect, we find that increases in market size and access to (cheaper) Chinese inputs render firm investments towards the more long-term categories as suggested by the negative coefficients in columns (1) and (2) (significant at the 1%-5% level). By including these trade controls, the magnitude of our coefficient of interest increases.

In specifications (3) and (4), we aim to control for financial constraints that firms face and that might affect our results. Shocks to credit supply or the cost of obtaining (long-term) credit could alter the relative return of long-term investments. As we want to identify the effect of competition, we need to make sure that time varying financial characteristics are properly controlled for. We add interactions of the depreciation measure with (i) the firms' current ratio in order to control for differences in firm liquidity, (ii) the firms' external dependence, i.e. the fraction of capital expenditures that are not financed by internal capital flows to control for differences in credit demand and (iii) a proxy for the capital costs that the firm faces measured as interest expenditures over total liabilities. Including these financial controls leaves our coefficient of interest positive and significant at the 5% level (with the exception of specification (2), Panel B where it renders insignificant).

Lastly, we assess the robustness of our estimations with respect to the measurement of investments in Table 12. In the theory section, we derived a within-firm difference-in-differences estimator (see equations (6) and (7)) suggesting that the *elasticity* of investments within firms with respect to product market competition should depend on the depreciation of the investment category. This naturally translated to specifications using the logarithm of investments as the dependent variable. In order to illustrate that our results are not determined by a scale effect because some investments are much smaller in their magnitudes on average, we use the investment of each category normalized by the total investment expenditures across categories within a firm-year as the dependent variable. Specifications (1) to (3) estimate the tariff difference-in-differences, the import competition OLS and the IV for the period 1999-2003 including firm-year and category-year fixed effects as well as industry controls interacted with the depreciation proxy. We still find empirical support for *Prediction 1*: we estimate positive  $\beta_1$  and  $\beta_2$ . The coefficient  $\beta_2$  for  $\ln(\text{ImpComp}_{st}) \times \text{Depr}_c$  is significant at the 1% level. The

significance for the coefficient  $\beta_1$  is weaker: it turns out significant at the 10% level in Panel A and insignificant in Panel B.

Next, we deal with zero investments which are excluded when the dependent variable is the logarithm of investments. It should be noted that also in specifications (1) to (3), when we use the share of investments as dependent variable, zero investments are included (with the exception that those observations are excluded where all investments within a firm-year are zero). As an alternative method to handle zero investments, we use the inverse hyperbolic sine transformation of investments as the dependent variable in specifications (4) to (6). This transformation keeps zero investments but basically looks like the natural logarithm for values above about two. We still estimate a positive and significant coefficient  $\beta_2$ , however the positive estimates of  $\beta_1$  turn out insignificant in both Panels.

Finally, we consider the of role missing investment observations. In Table 2 that summarizes our investment data it becomes apparent that there are many cases of missing investments. We do not know the correct value of those observations. To assess the robustness of our estimations, we assume that these were zero investments and again apply the inverse hyperbolic sine transformation throughout specifications (7) to (9) in order to see if our results would go through if missings were in fact mostly non-investments. Here we estimate a positive and significant coefficient  $\beta_2$  at the 1% level and again the positive estimates of  $\beta_1$  turn out insignificant in Panel B and significant at the 5% level in Panel A.

## 5 Conclusion

This article examines how the exposure to foreign competition affects the composition of short-term relative to long-term investments within firms. In order to guide our empirical strategy, we develop a stylized framework which illustrates the investment decision of a representative firm with respect to short- and long-term investments. An increase in the toughness of competition reduces the relative value of long-term investments and induces firms to shift their investment composition towards short-term investments. The magnitude of this effect varies with firm productivity. We test these predictions based on the population of listed US manufacturing firms by using data on seven asset classes which we order according to their depreciation rates. Based on our framework, the empirical strategy employs a difference-in-differences estimator where we exploit the rise in Chinese imports to the US due to China's accession to the WTO as quasi-natural experiment. This approach allows using firm-year fixed effects as well as investment category fixed effects in order to identify the effect of trade induced competition on the composition of investments within firms. The empirical results are in line with our predictions. Import competition shifts the composition of investments towards more short-lived categories and the effect depends on firm size. Our results are robust to the inclusion of controls that account for alternative channels at the firm and sector level such as various measures of financial constraints and factor intensities.

We believe that adjustments in the composition of investments can have important economic implications. If trade induced competition incentivizes firms to disregard the long-term perspective this

implies a loss in sustainability, higher financing costs as well as changes in the firm size distribution. This suggests new research directions. Future research might for example study how changes in the composition of investment relate to the welfare effects of globalization.

## References

- Abadie, A., Athey, S., Imbens, G. and Wooldridge, J. “When Should You Adjust Standard Errors for Clustering?” Discussion Paper no. 24003, National Bureau of Economic Research, 2017.
- Aghion, P., Angeletos, G.-M., Banerjee, A. and Manova, K. “Volatility and Growth: Credit Constraints and the Composition of Investment.” *Journal of Monetary Economics*, Vol. 57 (2010), pp. 246–265.
- Atkeson, A., Eifeldt, A. and Weill, P.-O. “Measuring the Financial Soundness of U.S. Firms, 1926-2012.” *Research in Economics*, Vol. 71 (2017), pp. 613–615.
- Autor, D., Dorn, D. and Hanson, G. “The China Syndrome: Local Labor Market Effects of Import Competition in the United States.” *American Economic Review*, Vol. 103 (2013), pp. 2121–2168.
- Autor, D., Dorn, D. and Hanson, G. “The China Shock: Learning from Labor Market Adjustment to Large Changes in Trade.” *Annual Review of Economics*, Vol. 8 (2016), 205–240.
- Bachmann, R., Elstner, S. and Hristov, A. “Surprise, Surprise - Measuring Firm-Level Investment Innovations.” *Journal of Economic Dynamics and Control*, Vol. 83 (2017), pp. 107–148.
- Bj̄œcnabou, R. and Tirole, J. “Bonus Culture: Competitive Pay, Screening, and Multitasking.” *Journal of Political Economy*, Vol. 124 (2016), pp. 305–370.
- Bernard, A., Jensen, J. and Schott, P. “Survival of the Best Fit: Exposure to Low-Wage Countries and the (Uneven) Growth of U.S. Manufacturing Plants.” *Journal of International Economics*, Vol. 68 (2006), pp. 219–237.
- Bernard, A., Redding, S. and Schott, P. “Multiple-Product Firms and Product Switching.” *American Economic Review*, Vol. 100 (2010), pp. 70–97.
- Bloom, N., Draca, M. and Van Reenen, J. “Trade Induced Technical Change? The Impact of Chinese Imports on Innovation, IT and Productivity.” *Review of Economic Studies*, Vol. 83 (2016), pp. 87–117.
- Buchheim, L. and Link, S. “The Effect of Disaggregate Information on the Expectation Formation of Firms.” Discussion Paper no. 6768, CESifo, 2018.
- Bustos, P. “Trade Liberalization, Exports, and Technology Upgrading: Evidence on the Impact of MERCOSUR on Argentinian Firms.” *American Economic Review*, Vol. 101 (2011), pp. 304–340.
- Chen, C., Senga, T., Sun, C. and Zhang, H. “Firm Expectations and Investment: Evidence from the China-Japan Island Dispute.” Discussion Paper no. 838, Queen Mary University of London, 2017.
- Coibion, O., Gorodnichenko, Y. and Kumar, S. “How Do Firms Form Their Expectations? New Survey Evidence.” *American Economic Review*, Vol. 108 (2018), pp. 2671–2713.

- Cooper, R. and Haltiwanger, J. “On the Nature of Capital Adjustment Costs.” *Review of Economic Studies*, Vol. 73 (2006), pp. 611–633.
- Dhingra, S. “Trading Away Wide Brands for Cheap Brands.” *American Economic Review*, Vol. 103 (2013), pp. 2554–2584.
- Eckel, C. and Neary, J. “Multi-Product Firms and Flexible Manufacturing in the Global Economy.” *Review of Economic Studies*, Vol. 77 (2010), pp. 188–217.
- Feenstra, R. and Hanson, G. “The Impact of Outsourcing and High-Technology Capital on Wages: Estimates for the United States, 1979–1990.” *Quarterly Journal of Economics*, Vol. 114 (1999), pp. 907–940.
- Feng, L., Li, Z. and Swenson, D. “Trade Policy Uncertainty and Exports: Evidence from China’s WTO Accession.” *Journal of International Economics*, Vol. 106 (2017), pp. 20–36.
- Foley, F. and Manova, K. “International Trade, Multinational Activity, and Corporate Finance.” *Annual Review of Economics*, Vol. 7 (2015), pp. 119–146.
- Fresard, L. “Financial Strength and Product Market Behavior: The Real Effects of Corporate Cash Holdings.” *Journal of Finance*, Vol. 65 (2010), pp. 1097–1122.
- Garicano, L. and Rayo, L. “Why Organizations Fail: Models and Cases.” *Journal of Economic Literature*, Vol. 54 (2016), pp. 137–192.
- Garicano, L. and Steinwender, C. “Survive Another Day: Using Changes in the Composition of Investments to Measure the Cost of Credit Constraints.” *Review of Economics and Statistics*, Vol. 98 (2016), pp. 913–924.
- Gennaioli, N., Ma, Y. and Shleifer, A. “Expectations and Investment.” *NBER Macroeconomics Annual*, Vol. 30 (2016), pp. 379–431.
- Gorodnichenko, Y., Svejnar, J. and Terrell, K. “Globalization and Innovation in Emerging Markets.” *American Economic Journal: Macroeconomics*, Vol. 2 (2010), pp. 194–226.
- Guadalupe, M. and Wulf, J. “The Flattening Firm and Product Market Competition: The Effect of Trade Liberalization on Corporate Hierarchies.” *American Economic Journal: Applied Economics*, Vol. 2 (2010), pp. 105–127.
- Hashmi, A. “Competition and Innovation: The Inverted-U Relationship Revisited.” *Review of Economics and Statistics*, Vol. 95 (2013), pp. 1653–1668.
- Iacovone, L., Rauch, F. and Winters, L. “Trade as an Engine of Creative Destruction: Mexican Experience With Chinese Competition.” *Journal of International Economics*, Vol. 89 (2013), pp. 379–392.
- Lileeva, A. and Trefler, D. “Improved Access to Foreign Markets Raises Plant-level Productivity ... For Some Plants.” *Quarterly Journal of Economics*, Vol. 125 (2010), pp. 1051–1099.



- Manova, K. “Credit Constraints, Heterogeneous Firms, and International Trade.” *Review of Economic Studies*, Vol. 80 (2013), pp. 711–744.
- Mayer, T., Melitz, M. and Ottaviano, G. “Market Size, Competition, and the Product Mix of Exporters.” *American Economic Review*, Vol. 104 (2014), pp. 495–536.
- Melitz, M. “The Impact of Trade on Intra-Industry Reallocations and Aggregate Industry Productivity.” *Econometrica*, Vol. 71 (2003), pp. 1695–1725.
- Melitz, M. and Ottaviano, G. “Market Size, Trade, and Productivity.” *Review of Economic Studies*, Vol. 75 (2008), pp. 295–316.
- Nocke, V. and Yeaple, S. “Globalization And Multiproduct Firms.” *International Economic Review*, Vol. 55 (2014), pp. 993–1018.
- Pierce, J. and Schott, P. “The Surprisingly Swift Decline of US Manufacturing Employment.” *American Economic Review*, Vol. 106 (2016), pp. 1632–1662.
- Salop, S. “Monopolistic Competition with Outside Goods.” *Bell Journal of Economics*, Vol. 10 (1979), pp. 141–156.
- Terry, S. “The Macro Impact of Short-Termism.” Discussion Paper no. 15-022, Stanford Institute for Economic Policy Research, 2015.
- Utar, H. “Workers Beneath the Floodgates: The Impact of Removing Trade Quotas for China on Danish Workers.” *Review of Economics and Statistics*, Vol. 100 (2018).
- Valta, P. “Competition and the Cost of Debt.” *Journal of Financial Economics*, Vol. 105 (2012), pp. 661–682.
- Xu, J. “Profitability and Capital Structure: Evidence from Import Penetration.” *Journal of Financial Economics*, Vol. 106 (2012), pp. 427–446.

**Table 1: Selected Summary Statistics on Firms and Industries**

	Obs.	Mean	Std. Dev.	Min.	Max.
<b>Industry Level</b>					
Pre-WTO-Tariff	127	4.4	3.9	0.0	21.8
Low-Skill-Intensity (industry average)	133	0.6	0.1	0.1	0.8
<b>Industry-Year Level</b>					
Capital-Intensity	1,849	129.0	150.2	8.7	1,450.5
Low-Skill-Intensity	1,849	0.4	0.1	0.2	0.9
TFP Index	1,849	1.0	0.3	0.5	7.0
Import Competition	1,872	0.1	0.4	-4.6	7.1
Offshoring	1,854	0.1	0.1	0.0	0.9
Export Market Exposure	1,872	0.0	0.3	-5.6	6.1
<b>Firm-Year Level</b>					
Current Ratio	33,498	3.8	6.6	0.0	503.3
External Dependence	32,974	15.2	232.3	0.0	26,257.0
Capital Costs	33,392	0.2	0.3	-0.1	11.9

**Table 2: Summary Statistics on the Investment Categories**

Investment (in mio. USD)	Applied Depr. Rate	Obs.	Mean	Std. Dev.	Min.	25th pct.	75th pct.	Max.	Zeros	Missings
Advertising	60%	9,559	81.5	397.7	0	0.3	14.8	8,667.0	119	54,410
Computer	30%	2,702	6.1	26.9	0	0.1	3.3	776.8	8	61,267
R&D	20%	27,357	75.3	383.8	0	1.2	25.7	8,000.0	2,982	36,612
Transportation	16%	4,088	1.2	8.6	0	0.0	0.1	221.7	1,429	59,881
Machinery	12%	24,631	71.2	291.0	0	1.0	31.3	8,910.6	20	39,338
Buildings	3%	17,741	36.7	176.0	0	0.7	17.6	11,104.5	228	46,228
Land	0%	14,600	6.6	73.0	0	0.1	2.5	7,150.9	252	49,369

Figure 1: The Impact of Tougher Competition on the Composition of Investments

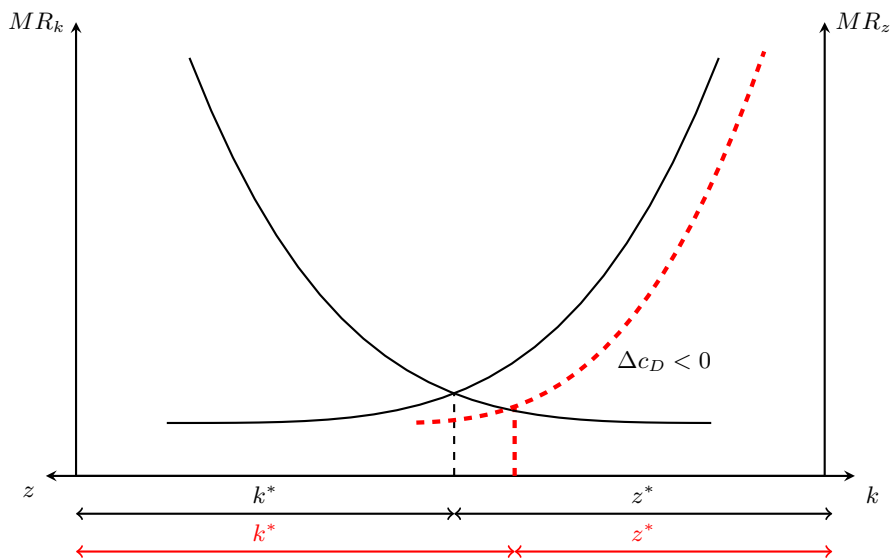
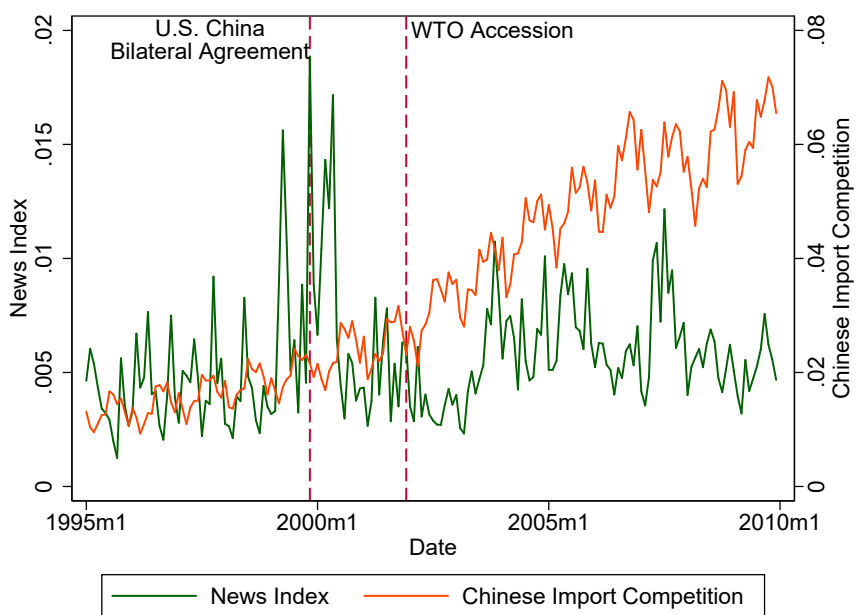
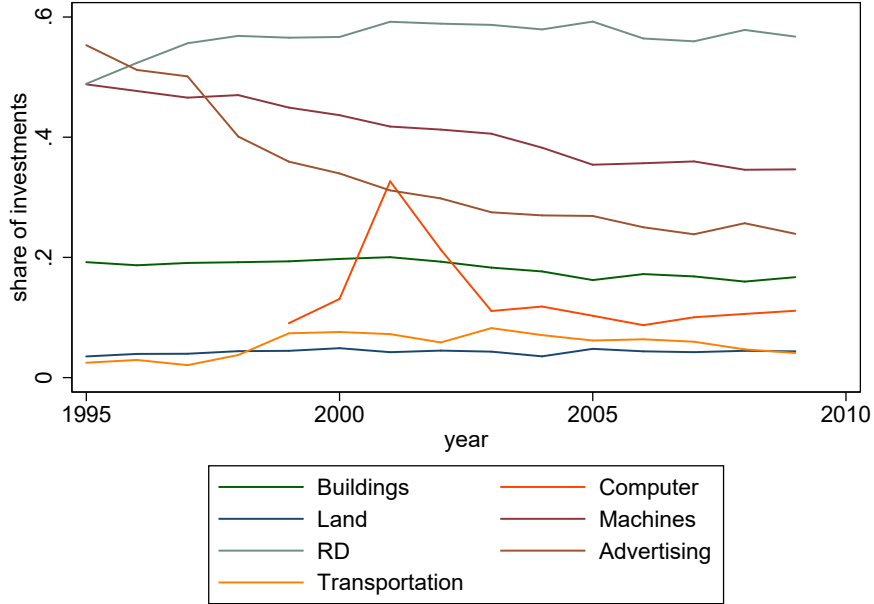


Figure 2: Monthly Import Competition from China and Newspaper Coverage on the Chinese WTO Accession

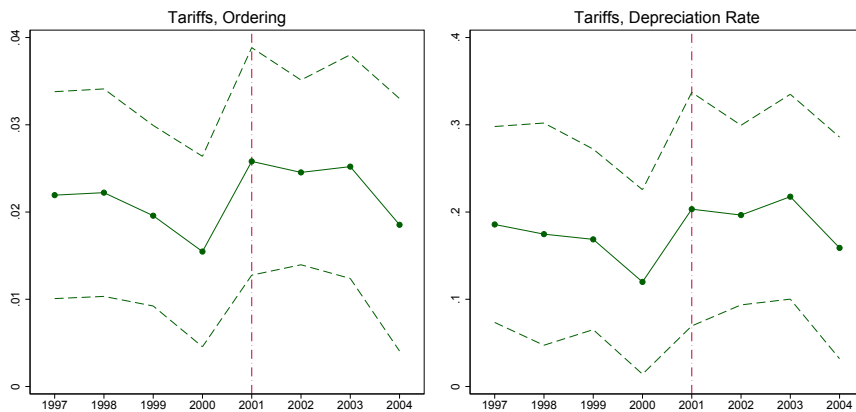


**Figure 3: Shares of Investment Categories over Time**



*Notes:* The figure plots the annual means of the investments into each category relative to total firm investments into all 7 categories for the firms in the sample.

**Figure 4: The Impact of the Chinese WTO Accession on the Durability of Investments**



*Notes:* The figure plots coefficient estimates of  $Pre-WTO-Tariff * Depreciation * Year Dummies$  from Table 5. The dashed lines correspond to 95% confidence intervals.

**Table 3: The Impact of the Chinese WTO Accession on the Durability of Investments - Exploiting Sectoral Differences in Pre-WTO Tariff Rates**

Dependent Variable: $\log(\text{Investment})$						
	(1)	(2)	(3)	(4)	(5)	(6)
<b>Panel A: Measure of Depreciation: Ordering</b>						
Post2000 * Pre-WTO-Tariff * Depreciation	0.00920*** (0.00300)	0.0107*** (0.00303)	0.00957*** (0.00334)	0.00636** (0.00315)	0.00815** (0.00320)	0.00743** (0.00320)
Pre-WTO-Tariff * Depreciation	0.00187 (0.00611)	0.000882 (0.00599)	0.0136** (0.00553)	0.00489 (0.00586)	0.00377 (0.00571)	0.0166*** (0.00498)
Post2000 * Depreciation	-0.0295** (0.0125)			-0.0359*** (0.0133)		
<b>Panel B: Measure of Depreciation: Depreciation Rate</b>						
Post2000 * Pre-WTO-Tariff * Depreciation	0.0848*** (0.0267)	0.0894*** (0.0268)	0.0793*** (0.0270)	0.0642** (0.0302)	0.0692** (0.0301)	0.0604** (0.0296)
Pre-WTO-Tariff * Depreciation	0.0764 (0.0529)	0.0733 (0.0523)	0.100* (0.0549)	0.105** (0.0489)	0.102** (0.0481)	0.135*** (0.0507)
Post2000 * Depreciation	-0.495*** (0.124)			-0.642*** (0.138)		
Industry Controls * Depreciation	no	no	yes	no	no	yes
Category FE	yes	no	no	yes	no	no
Category-Year FE	no	yes	yes	no	yes	yes
Firm-Year FE	yes	yes	yes	yes	yes	yes
Observations	18,302	18,301	18,047	30,949	30,947	30,515
No. Firms	2,345	2,345	2,310	2,695	2,695	2,655
Sample Time	2000 - 2002	2000 - 2002	2000 - 2002	1999 - 2003	1999 - 2003	1999 - 2003

*Notes:* Investment categories and assumed depreciation rates: Land (0%), Buildings (3%), Machines (12%), Transportation (16%), R&D (20%), Computer (30%), Advertising (60%). The ordering of categories resembles the ordering of depreciation rates. Investment expenses are either derived from balance sheet data on assets (Land, Buildings, Machines, Transportation and Computer) or taken from the income statement (R&D and Advertising). *Post2000* is an indicator that takes the value 1 if the year is 2001 or later. *Pre-WTO-Tariff* is the simple industry average (over the years 1995-1999) of the effectively applied tariff on US imports from China as reported in the WITS/Comtrade database. Industry controls are capital-intensity, low-skill-intensity and a TFP index. Standard errors are cluster-robust at the SIC industry level. \*\*\*  $p < 0.01$ , \*\*  $p < 0.05$ , \*  $p < 0.1$

**Table 4: Chinese Import Competition and the Durability of Investments**

Dependent Variable: $\log(\text{Investment})$						
	(1)	(2)	(3)	(4)	(5)	(6)
<b>Panel A: Measure of Depreciation: Ordering</b>						
$\log(\text{ImpComp})$ * Depreciation	0.0245*** (0.00811)	0.0209** (0.00883)	0.0566*** (0.0188)	0.0284*** (0.0101)	0.0246** (0.00980)	0.0834*** (0.0315)
1st Stage IV Coefficient			0.236*** (0.0424)			0.173*** (0.0614)
1st Stage F-Test			30.95			16.26
<b>Panel B: Measure of Depreciation: Depreciation Rate</b>						
$\log(\text{ImpComp})$ * Depreciation	0.133 (0.0960)	0.224** (0.100)	0.382* (0.213)	0.218** (0.105)	0.287*** (0.109)	0.582* (0.305)
1st Stage IV Coefficient			0.170*** (0.0640)			0.172*** (0.0635)
1st Stage F-Test			21.89			13.83
Industry Controls * Depreciation	no	yes	yes	no	yes	yes
Category FE	yes	no	yes	yes	no	yes
Category-Year FE	no	yes	no	no	yes	no
Firm-Year FE	yes	yes	yes	yes	yes	yes
Observations	88,920	88,607	88,548	30,535	30,426	30,428
No. Firms	3,520	3,504	3,495	2,664	2,652	2,652
Sample Time	1995 - 2009	1995 - 2009	1995 - 2009	1999 - 2003	1999 - 2003	1999 - 2003

*Notes:* Investment categories and assumed depreciation rates: Land (0%), Buildings (3%), Machines (12%), Transportation (16%), R&D (20%), Computer (30%), Advertising (60%). The ordering of categories resembles the ordering of depreciation rates. Investment expenses are either derived from balance sheet data on assets (Land, Buildings, Machines, Transportation and Computer) or taken from the income statement (R&D and Advertising). Import competition (*ImpComp*) are imports from China at the sectoral level, relative to domestic absorption (domestic production + imports from China - exports to China). Industry controls are capital-intensity, low-skill-intensity and a TFP index. Standard errors are cluster-robust at the SIC industry level. Columns (3) and (6) present IV estimates using *Post2000\*Pre-WTO-Tariff* to instrument for  $\log(\text{ImpComp})$ . The 1st Stage F-Test statistics correspond to Kleibergen-Paap rank tests. \*\*\*  $p < 0.01$ , \*\*  $p < 0.05$ , \*  $p < 0.1$

**Table 5: The Impact of the Chinese WTO Accession on the Durability of Investments - Difference-in-Differences by Year**

Dependent Variable: log(Investment)		
	(1)	(2)
Measure of Depreciation:	Ordering	Depreciation Rate
Pre-WTO-Tariff * Depreciation * 1997	0.0219*** (0.00599)	0.186*** (0.0567)
Pre-WTO-Tariff * Depreciation * 1998	0.0222*** (0.00601)	0.175*** (0.0643)
Pre-WTO-Tariff * Depreciation * 1999	0.0196*** (0.00523)	0.169*** (0.0522)
Pre-WTO-Tariff * Depreciation * 2000	0.0155*** (0.00551)	0.120** (0.0534)
Pre-WTO-Tariff * Depreciation * 2001	0.0258*** (0.00659)	0.203*** (0.0676)
Pre-WTO-Tariff * Depreciation * 2002	0.0245*** (0.00535)	0.197*** (0.0520)
Pre-WTO-Tariff * Depreciation * 2003	0.0252*** (0.00648)	0.218*** (0.0593)
Pre-WTO-Tariff * Depreciation * 2004	0.0185** (0.00731)	0.159** (0.0641)
<i>p</i> -Value: $H_0: \beta_{2000} = \beta_{2001}$	0.0166	0.0311
Industry Controls * Depreciation	yes	yes
Category-Year FE	yes	yes
Firm-Year FE	yes	yes
Observations	49,192	49,192
No. Firms	3,092	3,092
Sample Time	1997 - 2004	1997 - 2004

*Notes:* Investment categories and assumed depreciation rates: Land (0%), Buildings (3%), Machines (12%), Transportation (16%), R&D (20%), Computer (30%), Advertising (60%). The ordering of categories resembles the ordering of depreciation rates. Investment expenses are either derived from balance sheet data on assets (Land, Buildings, Machines, Transportation and Computer) or taken from the income statement (R&D and Advertising). *Pre-WTO-Tariff* is the simple industry average (over the years 1995-1999) of the effectively applied tariff on US imports from China as reported in the WITS/Comtrade database. Industry controls are capital-intensity, low-skill-intensity and a TFP index. The reported coefficients are plotted in Figure 4. Standard errors are cluster-robust at the SIC industry level. \*\*\*  $p < 0.01$ , \*\*  $p < 0.05$ , \*  $p < 0.1$

**Table 6: Heterogeneous Impact on the Durability of Investments**

Dependent Variable: $\log(\text{Investment})$		
	(1)	(2)
<b>Panel A: Measure of Depreciation: Ordering</b>		
Q1 * $\log(\text{ImpComp})$ * Depreciation	0.0376*** (0.0117)	0.0865*** (0.0297)
Q2 * $\log(\text{ImpComp})$ * Depreciation	0.0298*** (0.0110)	0.0756** (0.0309)
Q3 * $\log(\text{ImpComp})$ * Depreciation	0.0219* (0.0113)	0.0865** (0.0342)
Q4 * $\log(\text{ImpComp})$ * Depreciation	0.0196* (0.0101)	0.0545* (0.0281)
Q5 * $\log(\text{ImpComp})$ * Depreciation	0.0133 (0.0103)	0.0626** (0.0271)
$p$ -Value: $H_0: Q_1 = Q_5$	0.016	0.043
$p$ -Value: $H_0: \text{identical } Q_i$	0.137	0.146
1st Stage F-Test		3.343
<b>Panel B: Measure of Depreciation: Depreciation Rate</b>		
Q1 * $\log(\text{ImpComp})$ * Depreciation	0.464*** (0.108)	0.639** (0.274)
Q2 * $\log(\text{ImpComp})$ * Depreciation	0.310*** (0.113)	0.476 (0.297)
Q3 * $\log(\text{ImpComp})$ * Depreciation	0.242** (0.121)	0.648* (0.355)
Q4 * $\log(\text{ImpComp})$ * Depreciation	0.215* (0.115)	0.276 (0.264)
Q5 * $\log(\text{ImpComp})$ * Depreciation	0.149 (0.121)	0.422 (0.263)
$p$ -Value: $H_0: Q_1 = Q_5$	< 0.001	0.026
$p$ -Value: $H_0: \text{identical } Q_i$	0.004	0.04
1st Stage F-Test		2.843
Industry Controls * Depreciation	yes	yes
Category FE	yes	yes
Firm-Year FE	yes	yes
Observations	24,342	24,342
No. Firms	2,401	2,401
Sample Time	1999 - 2003	1999 - 2003

*Notes:* Investment categories and assumed depreciation rates: Land (0%), Buildings (3%), Machines (12%), Transportation (16%), R&D (20%), Computer (30%), Advertising (60%). The ordering of categories resembles the ordering of depreciation rates. Investment expenses are either derived from balance sheet data on assets (Land, Buildings, Machines, Transportation and Computer) or taken from the income statement (R&D and Advertising). Import competition ( $ImpComp$ ) are imports from China at the sectoral level, relative to domestic absorption (domestic production + imports from China - exports to China).  $Q_i$  corresponds to the within-industry total factor productivity quintile where the firm is sorted in (1 is the lowest, 5 is the highest). Column (2) presents IV estimates using  $Post2000*Pre-WTO-Tariff$  to instrument for  $\log(ImpComp)$ . Industry controls are capital-intensity, low-skill-intensity and a TFP index. The reported coefficients are plotted in Figure 5. Standard errors are cluster-robust at the SIC industry level.\*\*\*  $p < 0.01$ , \*\*  $p < 0.05$ , \*  $p < 0.1$



**Table 7: Heterogeneous Impact on the Durability of Investments - Exploiting Sectoral Differences in Pre-WTO Tariff Rates**

Dependent Variable: log(Investment)		
	(1)	(2)
Measure of Depreciation:	Ordering	Depreciation Rate
<u>Qi * Post2000 * Pre-WTO-Tariff * Depreciation</u>		
Q1	0.0171** (0.00746)	0.236*** (0.0661)
Q2	0.0104 (0.00718)	0.0539 (0.0699)
Q3	-0.00228 (0.00650)	-0.00248 (0.0516)
Q4	0.00725 (0.00766)	0.0572 (0.0676)
Q5	-0.0391* (0.0198)	-0.337* (0.183)
<u>Qi * Pre-WTO-Tariff * Depreciation</u>		
Q1	-0.00137 (0.00728)	0.00340 (0.0706)
Q2	0.0100 (0.00673)	0.171*** (0.0562)
Q3	0.00866 (0.00590)	0.125** (0.0615)
Q4	0.0138* (0.00817)	0.192*** (0.0732)
Q5	0.0216** (0.00947)	0.300*** (0.0903)
<u>Qi * Post2000 * Depreciation</u>		
Q1	-0.132*** (0.0433)	-1.762*** (0.425)
Q2	-0.0973** (0.0381)	-0.927** (0.415)
Q3	-0.0435 (0.0394)	-0.751** (0.299)
Q4	-0.0231 (0.0396)	-0.477 (0.362)
Q5	0.118* (0.0628)	0.513 (0.561)
<i>p</i> -Value: $H_0: Q_1 = Q_5$	0.0122	0.00482
<i>p</i> -Value: $H_0: \text{identical } Q_i$	0.133	0.0494
<hr/>		
Industry Controls * Depreciation	no	no
Category FE	yes	yes
Firm-Year FE	yes	yes
Observations	24,703	24,703
No. Firms	2,440	2,440
Sample Time	1999 - 2003	1999 - 2003

*Notes:* Investment categories and assumed depreciation rates: Land (0%), Buildings (3%), Machines (12%), Transportation (16%), R&D (20%), Computer (30%), Advertising (60%). The ordering of categories resembles the ordering of depreciation rates. Investment expenses are either derived from balance sheet data on assets (Land, Buildings, Machines, Transportation and Computer) or taken from the income statement (R&D and Advertising). *Post2000* is an indicator that takes the value 1 if the year is 2001 or later. *Pre-WTO-Tariff* is the simple industry average (over the years 1995-1999) of the effectively applied tariff on US imports from China as reported in the WITS/Comtrade database.  $Q_i$  corresponds to the within-industry total factor productivity quintile where the firm is sorted in (1 is the lowest, 5 is the highest). The reported coefficients are plotted in Figure 6. Standard errors are cluster-robust at the SIC industry level. \*\*\*  $p < 0.01$ , \*\*  $p < 0.05$ , \*  $p < 0.1$

**Table 8: The Impact of the Chinese WTO Accession on the Durability of Investments - Exploiting Sectoral Differences in Low-Skill-Intensity**

Dependent Variable: log(Investment)				
	(1)	(2)	(3)	(4)
<b>Panel A: Measure of Depreciation: Ordering</b>				
Post2000 * Low-Skill-Intensity * Depreciation	0.166*** (0.0545)	0.180*** (0.0588)	0.177*** (0.0580)	0.204*** (0.0627)
Low-Skill-Intensity * Depreciation	-0.579*** (0.135)	-0.317 (0.877)	-0.596*** (0.130)	-0.0672 (0.746)
Post2000 * Depreciation	-0.0794*** (0.0235)		-0.102*** (0.0286)	
<b>Panel B: Measure of Depreciation: Depreciation Rate</b>				
Post2000 * Low-Skill-Intensity * Depreciation	1.672*** (0.555)	1.478** (0.616)	1.896*** (0.644)	1.734** (0.704)
Low-Skill-Intensity* Depreciation	-1.019 (1.538)	0.373 (8.634)	-1.246 (1.563)	3.498 (7.540)
Post2000 * Depreciation	-1.015*** (0.240)		-1.343*** (0.299)	
Industry Controls * Depreciation	no	yes	no	yes
Category FE	yes	no	yes	no
Category-Year FE	no	yes	no	yes
Firm-Year FE	yes	yes	yes	yes
Observations	18,439	18,184	31,206	30,772
No. Firms	2,364	2,329	2,720	2,680
Sample Time	2000 - 2002	2000 - 2002	1999 - 2003	1999 - 2003

*Notes:* Investment categories and assumed depreciation rates: Land (0%), Buildings (3%), Machines (12%), Transportation (16%), R&D (20%), Computer (30%), Advertising (60%). The ordering of categories resembles the ordering of depreciation rates. Investment expenses are either derived from balance sheet data on assets (Land, Buildings, Machines, Transportation and Computer) or taken from the income statement (R&D and Advertising). *Post2000* is an indicator that takes the value 1 if the year is 2001 or later. *Low-Skill-Intensity* is the simple industry average (over the years 1995-1999) of the share of compensation for non-production workers in total compensation. Industry Controls are capital-intensity, low-skill-intensity and a TFP index. Standard errors are cluster-robust at the SIC industry level. \*\*\*  $p < 0.01$ , \*\*  $p < 0.05$ , \*  $p < 0.1$

**Table 9: Robustness: Chinese Import Competition and the Durability of Investments - Estimates by Investment Category**

Dependent Variable: $\log(\text{Investment})$		
	(1)	(2)
Land * $\log(\text{ImpComp})$	-0.0560 (0.0585)	-0.221 (0.214)
Buildings * $\log(\text{ImpComp})$	-0.0313 (0.0566)	-0.211 (0.201)
Machinery * $\log(\text{ImpComp})$	-0.0428 (0.0600)	-0.251 (0.186)
Transportation Equipment * $\log(\text{ImpComp})$	-0.0756 (0.0673)	-0.170 (0.231)
R&D * $\log(\text{ImpComp})$	0.136 (0.0838)	-0.162 (0.288)
Computer Equipment * $\log(\text{ImpComp})$	0.228** (0.0931)	0.0817 (0.208)
$p$ -Value: $H_0: \beta_c = 0$	< 0.001	0.537
Industry Controls * Depreciation	no	no
Category FE	yes	yes
Firm-Year FE	yes	yes
Observations	88,920	88,859
No. Firms	3,520	3,511
Sample Time	1995 - 2009	1995 - 2009

*Notes:* The ordering of categories resembles the ordering of depreciation rates. Omitted Category is Advertising. Investment expenses are either derived from balance sheet data on assets (Land, Buildings, Machines, Transportation and Computer) or taken from the income statement (R&D and Advertising). Import competition ( $\text{ImpComp}$ ) are imports from China at the sectoral level, relative to domestic absorption (domestic production + imports from China - exports to China). Column (2) presents IV estimates using  $\text{Post2000*Pre-WTO-Tariff}$  to instrument for  $\log(\text{ImpComp})$ . The reported coefficients are plotted in Figure 7. Standard errors are cluster-robust at the SIC industry level. \*\*\*  $p < 0.01$ , \*\*  $p < 0.05$ , \*  $p < 0.1$

Table 10: Robustness: Altering and Omitting Investment Categories

Dependent Variable: $\log(\text{Investment})$	(1)	(2)	(3)	(4)	(5)	(6)	(7)	(8)	(9)
Measure of Depreciation: Ordering									
$\log(\text{ImpComp}) * \text{Depreciation}$	0.0209** (0.00883)	0.0213** (0.00832)	0.0200*** (0.00727)	0.0214** (0.00903)	0.0220* (0.0111)	0.0301* (0.0172)	0.0604** (0.0279)	0.0506* (0.0274)	0.0166* (0.00908)
Industry Controls * Depreciation	yes	yes	yes	yes	yes	yes	yes	yes	yes
Category-Year FE	yes	yes	yes	yes	yes	yes	yes	yes	yes
Firm-Year FE	yes	yes	yes	yes	yes	yes	yes	yes	yes
Excluded Categories	none	R&D	R&D / Advertising	Transport / Computer	Land / Buildings	none	none	none	none
No. of Categories	7	6	5	5	5	4	3	3	7*
Observations	88,607	62,410	52,656	82,776	74,138	88,607	88,607	88,607	88,607
No. Firms	3,504	3,035	2,808	3,448	3,483	3,504	3,504	3,504	3,504
Sample Time	1995 - 2009	1995 - 2009	1995 - 2009	1995 - 2009	1995 - 2009	1995 - 2009	1995 - 2009	1995 - 2009	1995 - 2009

Notes: Investment categories and assumed depreciation rates: Land (0%), Buildings (3%), Machines (12%), Transportation (16%), R&D (20%), Computer (30%), Advertising (60%). The ordering of categories resembles the ordering of depreciation rates in specification (1)-(5). Specification (6) groups Land, Buildings and Machinery into one category and R&D and Computer into another. Specification (7) additionally takes Transportation into the category with Land, Buildings and Machinery, whereas specification (8) takes it into the category with R&D and Computer. In specification (9), R&D is ordered as the most long-term investment. Investment expenses are either derived from balance sheet data on assets (Land, Buildings, Machines, Transportation and Computer) or taken from the income statement (R&D and Advertising). Import competition (*ImpComp*) are imports from China at the sectoral level, relative to domestic absorption (domestic production + imports from China - exports to China). Industry Controls are capital-intensive, low-skill-intensity and a TFP index. Standard errors are cluster-robust at the SIC industry level. \*\*\*  $p < 0.01$ , \*\*  $p < 0.05$ , \*  $p < 0.1$

**Table 11: Robustness: Alternative Channels - Foreign Inputs, Export Markets and Financial Frictions**

Dependent Variable: $\log(\text{Investment})$				
	(1)	(2)	(3)	(4)
<b>Panel A: Measure of Depreciation: Ordering</b>				
$\log(\text{ImpComp})$ * Depreciation	0.0435*** (0.00855)	0.139*** (0.0434)	0.0227** (0.00899)	0.0581*** (0.0188)
$\log(\text{Offshoring})$ * Depreciation	-0.0366** (0.0181)	-0.117*** (0.0435)		
$\log(\text{ExpMarket})$ * Depreciation	-0.0448*** (0.00972)	-0.0658*** (0.0147)		
Current Ratio * Depreciation			0.0860*** (0.00310)	0.00726*** (0.00316)
External Dependence * Depreciation			0.000207*** (0.0000181)	0.000214*** (0.0000182)
Capital Cost * Depreciation			0.159 (0.0136)	0.301** (0.0151)
1st Stage F-Test		13.89		29.16
<b>Panel B: Measure of Depreciation: Depreciation Rate</b>				
$\log(\text{ImpComp})$ * Depreciation	0.496*** (0.0950)	1.006** (0.415)	0.244** (0.103)	0.440** (0.212)
$\log(\text{Offshoring})$ * Depreciation	-0.394*** (0.150)	-0.902** (0.430)		
$\log(\text{ExpMarket})$ * Depreciation	-0.535*** (0.0865)	-0.642*** (0.116)		
Current Ratio * Depreciation			-0.0213 (0.0269)	-0.0305 (0.0272)
External Dependence * Depreciation			0.00155* (0.000857)	0.00157* (0.000868)
Capital Cost * Depreciation			0.709* (0.396)	1.061* (0.576)
1st Stage F-Test		11.00		20.23
Industry Controls * Depreciation	yes	yes	yes	yes
Category FE	no	yes	no	yes
Category-Year FE	yes	no	yes	no
Firm-Year FE	yes	yes	yes	yes
Observations	88,476	88,417	76,249	76,222
No. Firms	3,480	3,471	3,206	3,201
Sample Time	1995 - 2009	1995 - 2009	1995 - 2009	1995 - 2009

*Notes:* Investment categories and assumed depreciation rates: Land (0%), Buildings (3%), Machines (12%), Transportation (16%), R&D (20%), Computer (30%), Advertising (60%). The ordering of categories resembles the ordering of depreciation rates. Investment expenses are either derived from balance sheet data on assets (Land, Buildings, Machines, Transportation and Computer) or taken from the income statement (R&D and Advertising). Import competition (*ImpComp*) are imports from China at the sectoral level, relative to domestic absorption (domestic production + imports from China - exports to China). *Offshoring* is the level of import competition at the input industry level; input industry shares are estimated on a similar basis to Feenstra and Hanson (1999). Export market size (*ExpMarket*) are exports to China relative to Chinese domestic absorption. Financial controls are time varying at the firm level: *Current Ratio* is the total of current assets over current liabilities, *External Dependence* is capital expenditure net of EBIT over total capital expenditure, *Capital Cost* is capital expenditure over total liabilities. Industry Controls are capital-intensity, low-skill-intensity and a TFP index. Standard errors are cluster-robust at the SIC industry level. Columns (2) and (4) present IV estimates using *Post2000\*Pre-WTO-Tariff* to instrument for  $\log(\text{ImpComp})$ . The 1st Stage F-Test statistics correspond to Kleibergen-Paap rank tests. \*\*\*  $p < 0.01$ , \*\*  $p < 0.05$ , \*  $p < 0.1$

Table 12: Robustness: Investment Shares, Zeros and Missing Investments

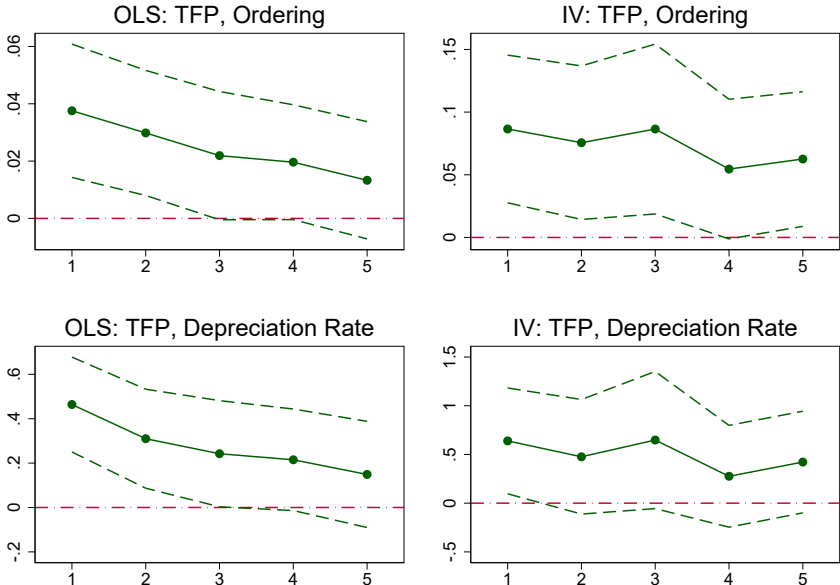
Dependent Variable:	(1)	(2)	(3)	(4)	(5)	(6)	(7)	(8)	(9)
	Investment Share			Investments (IHS Transf.)			Investments (IHS Transf., miss. as 0s)		
<b>Panel A: Measure of Depreciation: Ordering</b>									
Post2000 * Pre-WTO-Tariff * Depreciation	0.00141* (0.000831)			0.00447 (0.00294)			0.00163** (0.000802)		
Pre-WTO-Tariff * Depreciation	0.00343*** (0.000877)			0.0128*** (0.00371)			0.00587*** (0.00191)		
log(ImpComp) * Depreciation		0.00462*** (0.00169)	0.0271*** (0.00852)		0.0146** (0.00729)	0.0959*** (0.0319)		0.0110*** (0.00312)	0.0409*** (0.0128)
1st Stage F-Test			7.762			7.755			8.447
<b>Panel B: Measure of Depreciation: Depreciation Rate</b>									
Post2000 * Pre-WTO-Tariff * Depreciation	0.0121 (0.00908)			0.0412 (0.0266)			0.0142 (0.00864)		
Pre-WTO-Tariff * Depreciation	0.0312*** (0.0109)			0.117*** (0.0408)			0.0762*** (0.0245)		
log(ImpComp) * Depreciation		0.0636*** (0.0223)	0.240*** (0.0871)		0.194** (0.0872)	0.866** (0.342)		0.131*** (0.0362)	0.488*** (0.173)
1st Stage F-Test			7.380			7.379			8.447
Industry Controls * Depreciation	yes	yes	yes	yes	yes	yes	yes	yes	yes
Category-Year FE	yes	yes	yes	yes	yes	yes	yes	yes	yes
Firm-Year FE	yes	yes	yes	yes	yes	yes	yes	yes	yes
Observations	31,549	31,456	31,456	31,559	31,466	31,466	146,720	146,167	146,167
No. Firms	2,694	2,691	2,691	2,695	2,692	2,692	4,192	4,188	4,188
Sample Time	1999 - 2003	1999 - 2003	1999 - 2003	1999 - 2003	1999 - 2003	1999 - 2003	1999 - 2003	1999 - 2003	1999 - 2003

Notes: Investment categories and assumed depreciation rates: Land (0%), Buildings (3%), Machines (12%), Transportation (16%), R&D (20%), Computer (30%), Advertising (60%). The ordering of categories resembles the ordering of depreciation rates. Investment expenses are either derived from balance sheet data on assets (Land, Buildings, Machines, Transportation and Computer) or taken from the income statement (R&D and Advertising). *Investment Share* divides the individual category investments by the sum of investments within each firm-year (columns (1) - (3)). *Investments (IHS Transf.)* uses the inverse hyperbolic sine transformation instead of taking logarithms to include zeros (columns (4) - (6)). *Investments (IHS Transf., miss. as 0s)* also uses the inverse hyperbolic sine transformation but treats all missing investments as zeros (columns (7) - (9)). *Post2000* is an indicator that takes the value 1 if the year is 2001 or later. *Pre-WTO-Tariff* is the simple industry average (over the years 1995-1999) of the effectively applied tariff on US imports from China as reported in the WITS/Comtrade database. Import competition (*ImpComp*) are imports from China at the sectoral level, relative to domestic absorption (domestic production + imports from China - exports to China). Industry Controls are capital-intensity, low-skill-intensity and a TFP index. Standard errors are cluster-robust at the SIC industry level. Columns (3), (6) and (9) present IV estimates using *Post2000\*Pre-WTO-Tariff* to instrument for *log(ImpComp)*. The 1st Stage F-Test statistics correspond to Kleibergen-Paap rank tests. \*\*\*  $p < 0.01$ , \*\*  $p < 0.05$ , \*  $p < 0.1$ .

**Table 13: Variable Descriptions and Data Sources**

Variable	Description	Source
<b>Investment Variables</b>		
advertising <sub>it</sub>	<i>advertising</i> represents the cost of advertising media (i.e., radio, television, and periodicals) and promotional expenses in millions USD; Compustat variable name: XAD	Compustat
computer <sub>it</sub>	<i>computer software &amp; equipment</i> (period $t$ ) - $0.95 \times$ <i>computer software &amp; equipment</i> (period $t - 1$ ); <i>computer software &amp; equipment</i> (gross property plant and equipment) represents computer equipment and the information a computer uses to perform tasks in millions USD	Worldscope
R&D <sub>it</sub>	<i>research &amp; development expenses</i> (period $t$ ) represent all direct and indirect costs related to the creation and development of new processes, techniques, applications and products with commercial possibilities in millions USD	Worldscope
transportation equipment <sub>it</sub>	<i>transportation equipment</i> (period $t$ ) - $0.95 \times$ <i>transportation equipment</i> (period $t - 1$ ); <i>transportation equipment</i> (gross property plant and equipment) represents the cars, ships, planes or any other type of transportation equipment in millions USD	Worldscope
machines <sub>it</sub>	<i>machinery &amp; equipment</i> (period $t$ ) - $0.95 \times$ <i>machinery &amp; equipment</i> (period $t - 1$ ); <i>machinery &amp; equipment</i> (gross property plant and equipment) represent the machines and machine parts needed by the company to produce its products in millions USD	Worldscope
buildings <sub>it</sub>	<i>buildings</i> (period $t$ ) - $0.95 \times$ <i>buildings</i> (period $t - 1$ ); <i>buildings</i> (gross property plant and equipment) represent the architectural structure used in a business such as a factory, office complex or warehouse in millions USD	Worldscope
land <sub>it</sub>	<i>land</i> (period $t$ ) - $0.95 \times$ <i>land</i> (period $t - 1$ ); <i>land</i> (gross property plant and equipment) represents the real estate without buildings held for productive use, is recorded at its purchase price plus any costs related to its purchase such as lawyer's fees, escrow fees, title and recording fees in millions USD	Worldscope
<b>Firm Variables</b>		
TFP Quintile <sub>i</sub>	obtain the set of firm fixed effects $\mu_i$ from the regression $\ln(y_{it}) = \mu_i + \mu_t + \alpha_k \ln(k_{it}) + \alpha_n \ln(n_{it}) + \varepsilon_{it}$ , where $y_{it}$ is real sales (SALE deflated by BEA GDP deflator), $k_{it}$ is a constructed real capital stock (deflated by BEA nonresidential fixed investment good deflator) and $n_{it}$ is employment (EMP); capital stock is approximated with a perpetual inventory method, where we use the book value of the capital stock (PPEGT) in 1990 (or the first available year thereafter) as initial value and iterate forward by computing net investments (PPENT <sub>it</sub> -PPENT <sub>it-1</sub> ), where missing values of PPENT are replaced by a linear interpolation of its neighboring values; finally, we rank firm fixed effects $\mu_i$ within each 3 digit US SIC level and sort these into 5 bins of equal size	Compustat, BEA for price deflators
current ratio <sub>it</sub>	<i>current ratio</i> is an indication of a firm's market liquidity and ability to meet creditor's demands; defined as current assets divided by current liabilities during a given year $t$ (banker's rule: $>2$ for creditworthiness); Compustat variable names: ACT/LCT	Compustat
external dependence <sub>it</sub>	<i>external dependence</i> is the fraction of capital expenditures that are not financed by internal capital flows during a given year $t$ ; Compustat variable names: (CAPX - EBIT)/CAPX	Compustat
capital cost <sub>it</sub>	<i>capital cost</i> is defined as interest expenditures (net) over liabilities during a given year $t$ ; Compustat variable names: INTPN/LT	Compustat
distance to insolvency <sub>it</sub>	<i>distance to insolvency</i> is the inverse of the annual mean of a firm's daily squared stock returns $((P_{it}/P_{it-1})^2)$ multiplied with $\sqrt{252}$ (252 is the average number of trading days per year) during a given year $t$ ; based on Atkeson et al. (2017)	CRSP
analyst expectations <sub>it</sub>	<i>analyst expectations</i> are analysts' annual mean long-term growth forecasts from the I/B/E/S database. Long-term growth forecasts are the expected <i>annual</i> increase in operating earnings over the firm's next full business cycle. These forecasts refer to a period of between 3-5 years and are expressed as a percentage.	I/B/E/S
<b>Industry Variables</b>		
import competition <sub>st</sub>	<i>ImpComp</i> is import competition from China defined as $ImpComp = imports^{CHN} / (domestic shipments + imports^{CHN} - exports^{CHN})$ ; at the 3 digit US SIC level during a given year $t$	NBER CES data for vship, UN Comtrade for exports and imports
export market exposure <sub>st</sub>	<i>ExpMarket</i> is export market exposure to China defined as $ExpMarket = exports^{CHN} / (domestic shipments + imports^{CHN} - exports^{CHN})$ ; at the 3 digit US SIC level during a given year $t$	NBER CES data for vship, UN Comtrade for exports and imports
offshoring <sub>st</sub>	<i>Offshoring</i> is defined as $Offshoring = input imports^{CHN} / (domestic shipments + input imports^{CHN} - exports^{CHN})$ ; at the 3 digit US SIC level during a given year $t$ ; <i>input imports<sup>CHN</sup></i> are defined as the weighted average of imports from China, where weights are constructed using an input-output table following Feenstra and Hanson (1999)	NBER CES data for vship, UN Comtrade for exports and imports
pre-WTO tariff <sub>s</sub>	simple industry average tariff over the years 1995-1999 of the effectively applied US tariff on imports from China; at the 3 digit US SIC level	UN Comtrade
low-skill-intensity <sub>s</sub>	simple industry <i>average</i> low-skill-intensity over the years 1995-1999 of the share of compensation for non-production workers in total compensation; NBER CES variable names: (PAY - PRODW)/PAY; at the 3 digit US SIC level	NBER CES data
capital-intensity <sub>st</sub>	total real capital stock in thousands USD per employee; at the 3 digit US SIC level during a given year $t$ ; NBER CES variable names: CAP/EMP	NBER CES data
low-skill-intensity <sub>st</sub>	share of compensation for non-production workers in total compensation; at the 3 digit US SIC level during a given year $t$ ; NBER CES variable names: (PAY - PRODW)/PAY	NBER CES data
tfp <sub>st</sub>	5-factor NBER TFP index with base year 1995; $tfp_{95} = 1$	NBER CES data

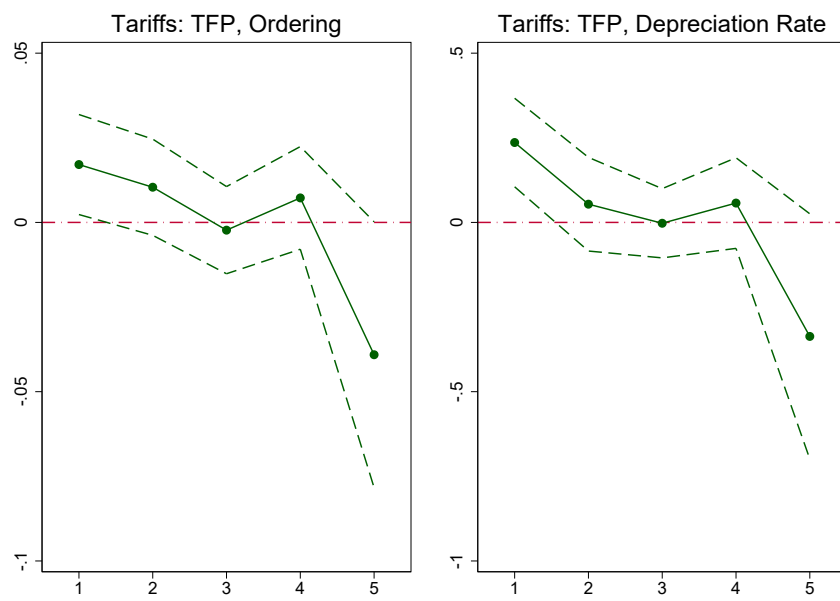
Figure 5: Heterogeneous Impact on the Durability of Investments



Notes: The figure plots coefficient estimates of  $Q_i * \log(\text{ImpComp}) * \text{Depreciation}$  from Table 6. The dashed lines correspond to 95% confidence intervals.

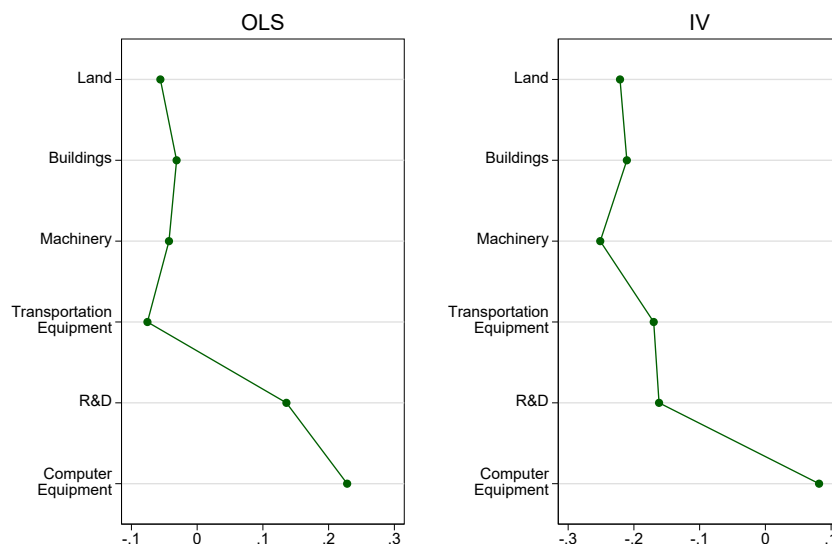


**Figure 6: Heterogeneous Impact on the Durability of Investments - Exploiting Sectoral Differences in Pre-WTO Tariff Rates**



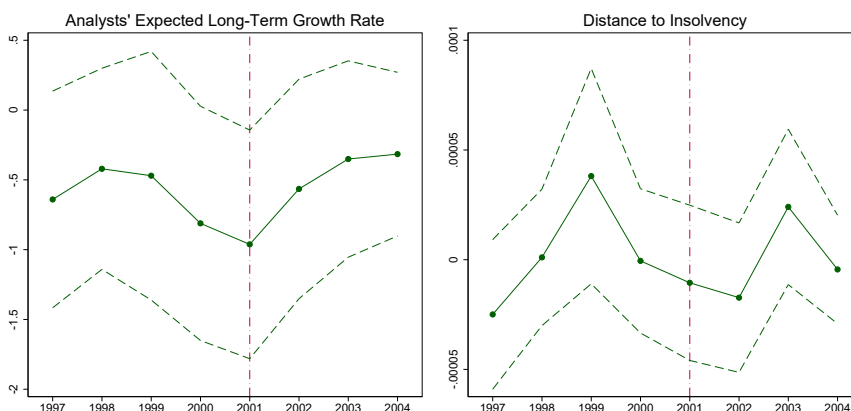
*Notes:* The figure plots coefficient estimates of  $Q_i * Post2000 * Pre-WTO-Tariff * Depreciation$  from Table 7. The dashed lines correspond to 95% confidence intervals.

**Figure 7: Robustness: Chinese Import Competition and the Durability of Investments - Estimates by Investment Category**



Notes: The figure plots coefficient estimates of  $\log(\text{ImpComp}) * \text{Category}$  from Table 9. The omitted category is Advertising.

**Figure 8: Chinese WTO Accession, Analyst Expectations and Distance to Insolvency**



Notes: The figure plots coefficient estimates of  $\text{Pre-WTO-Tariff} * \text{Year Dummies}$  on firm-level *Analysts' Expected Long-term Growth Rates* (left graph) and firm-level *Distance to Insolvency* (right graph). The dashed lines correspond to 95% confidence intervals. The *Analysts' Expected Long-term Growth Rate* represents an expected annual increase in operating earnings over the firm's next full business cycle. These forecasts refer to a period of between 3-5 years and are expressed as a percentage. *Distance to Insolvency* is the inverse of the annual mean of a firm's daily squared stock returns.

## A Theoretical Appendix

### Quality-Increasing Investments

We outlined the theoretical framework by stating that short- and long-term investments reduce production costs in  $t = 0$  or  $t = 1$ . Here, we show that our results are similar when we assume that investments are increasing the perceived-quality of products. Consumers maximize the following utility function over the consumption and quality levels of a set of differentiated products and an outside good  $H$ :

$$U_t = H_t + \int_i (1 + d_{it}) q_{it} - \frac{\gamma}{2} \int_i (q_{it})^2 - \frac{1}{2} \left( \int_i q_{it} \right)^2,$$

where  $d_{it}$  is the perceived-quality of firm  $i$  and  $q_{it}$  is the consumed quantity. Dropping the index  $i$  for the individual firm, profits can be written as  $\pi_t = \frac{L_t}{\gamma} (c_t^D + d_t - c^*)^2$ , where  $c_t^D = \frac{\gamma + N_t \bar{p}_t - N_t \kappa \bar{d}_t}{N_t + \gamma}$  is our inverse measure of competition. Suppose that firm has costs  $c^*$  and that investments increase the firm's perceived quality in the following way:  $d_0 = k^{0.5}$  and  $d_1 = \varphi z^{0.5}$ . The firm chooses  $k$  and  $z$  to maximize  $\pi(c_0) + (1 - \delta)\pi(c_1) - rk - rz$ . Taking the f.o.c. with respect to  $k$  and  $z$  and taking logs results in the same difference-in-differences equation identifying the shift in the relative composition of investments induced by tougher competition as in equation (7).

### Productivity Differences and the Elasticity of Demand

As demand is linear in our model, the price elasticity of demand  $\varepsilon_{it} \equiv (\partial q_{it} / \partial p_{it}) (p_{it} / q_{it})$  increases with higher prices  $p_{it}$  because the ratio  $\frac{p_{it}}{q_{it}}$  rises whereas the slope of the demand curve  $\frac{\partial p_{it}}{\partial q_{it}}$  remains constant along the demand curve. As a consequence, firms with higher marginal costs face a larger demand elasticity because they set their prices such that they are located on the relatively more elastic parts of the demand curve. We illustrate this with the help of Figure 9. Here, two firms with different marginal costs  $c_{1t} < c_{2t}$  set their prices optimally such that marginal revenues equal their marginal costs. As  $p_{1t}/q_{1t} < p_{2t}/q_{2t}$  it can be seen that firm 2 with the larger marginal costs faces a higher price elasticity of demand.

### The Impact of Market Size on Investment Composition

Given that trade liberalization is typically associated with both, higher import competition and larger export markets, we also study what an increase in market size would imply for our difference-in-differences estimator. From equations (4a) and (4b) it becomes clear that a larger market size  $L_t$  generates additional demand such that the marginal return of short- and long-term investments increases resulting in a higher level of firm investments for a given level of  $c_t^D$  (for both types of investments).<sup>31</sup>

An increase in market size  $L_1 > L_0$  in period 1 raises demand and profits and thus the relative value of long-term investments, such that firms become less short-term oriented. Hence, the market size

---

<sup>31</sup>These effects of trade liberalization on the investment *volume* of firms have been studied empirically by Lileeva and Trefler (2010) and Bustos (2011).

effect works in the opposite direction to the competition effect. As a result, the new intersection of the marginal return of short- and long-term investments shifts to the left implying a reduction in the fraction of short-term investments whereas the fraction of long-term investments increases. The magnitude of the effect depends again on firm productivity  $c^*$ . However, the role of productivity is ambiguous and depends on the sign of the parameter  $\theta$  which determines the impact of firm productivity on the efficiency of investments. If  $\theta > 0$ , less productive firms are more efficient in cutting costs and thus they face relatively larger incentives to engage in long-term investments. If  $\theta < 0$ , high productive firms are more effective in lowering unit costs such that an increase in market size in period 1 creates larger incentives for high productive firms to shift investment expenditures towards long-term investments. If  $\theta = 0$ , firm productivity has no impact on the magnitude of cost reductions. In the empirical analysis, we therefore also take account of this market size effect to control for confounding effects.

## B Empirical Appendix

### Calculation of the Marginal Effects

**Economic Magnitudes based on Chinese Import Competition** Consider an increase in import competition of 57.4%. This corresponds to the increase of the import competition variable in our estimation sample from 1999 to 2003. We use the IV regression results from Table 4, Panel B to calculate the relative change in each category. The IV coefficient estimate of 0.582 in specification (6), Panel B translates to a 17.2% larger reduction of land investments compared to advertising investments.<sup>32</sup>

Next, we want to assess a counterfactual where we study the change in investment duration due to the competition shock associated with an increase in import competition of 57.4%. As we only know the distortion across categories and not the level effect of import competition on investments, we need to assume the investment elasticity in one base category. Here, we assume a 0% change in Land investments with respect to a trade shock (when regressing import competition on Land investments and adding firm and year fixed effects, we find Land investments to be inelastic with respect to import competition).

From Table 2, we obtain the average investment share for each investment category by aggregating. When computing those shares, we implicitly assume that missing observations are indeed zero investments.<sup>33</sup> The resulting investment shares are 1.8% for land investments, 12.1% for building investments, 32.7% for machinery investments, 0.1% for transport equipment investments, 38.4% for R&D investments, 0.3% for computer investments and 14.5% for advertising investments. Using these shares, we obtain an average sample depreciation rate of 20.8% from multiplying each share with the depreciation rate for the respective category. The calculated average sample depreciation rate of 20.8% then implies that the average firm investment lasts 1754.9 days [=  $(1/r) \times 365$ ].

<sup>32</sup>Alternatively, a linear approximation yields a 20% wedge:  $0.582 \times 57.4\% \times (60\% - 0\%) = 0.200$ .

<sup>33</sup>Figure 3 plots the average investment composition in our sample over time.

Applying the relative percentage changes in each category based on the IV coefficient estimate of 0.582, we can then construct new counterfactual after-trade-shock investment shares. As before, we use these shares to obtain the new average depreciation rate. Investments now fully depreciate after 1689.4 days, implying that import competition has reduced the duration of investments by about 66 days on average.

Next, suppose that this shorter investment life-span of 66 days needs to be financed. If the corresponding interest rate is 3% per annum (365 days), this translates into an additional costs of  $0.03 \times \$1.000 \times \frac{66}{365} = \$5.42$  for each \$1.000 invested.

**Economic Magnitudes based on pre-WTO Tariffs** Alternatively, we can compare two firms with different tariff exposures based on the difference-in-differences estimations from Table 3. We compare two hypothetical firms: one firm belonging to an industry with low pre-WTO tariffs at the 25th percentile of the tariff distribution (with an ad valorem tariff rate of 1.914%) and the other firm belonging to an industry with high pre-WTO tariffs at the 75th percentile of the tariff distribution (with an ad valorem tariff rate of 3.786%). For the sample window from 1999 and 2003, we estimate a coefficient of 0.0642 for the term Post2000×Pre-WTO-Tariff×Depreciation and -0.642 for the coefficient of Post2000×Depreciation (see Table 3, specification (4), Panel B). These estimates translate to a 7.5% larger reduction of land investments compared to advertising investments in the high-tariff firm relative to the low-tariff firm:

- investment wedge of a high-tariff firm; pre versus post 2000:

$$\begin{aligned} \left[ \ln \left( I_{adv,post}^{high} \right) - \ln \left( I_{adv,pre}^{high} \right) \right] - \left[ \ln \left( I_{land,post}^{high} \right) - \ln \left( I_{land,pre}^{high} \right) \right] &= 0.0642 \times 3.786 \times (0.6 - 0.0) \\ &\quad - 0.642 \times (0.6 - 0.0) \\ &\Leftrightarrow \\ \ln \left( \frac{I_{adv,post}^{high} / I_{adv,pre}^{high}}{I_{land,post}^{high} / I_{land,pre}^{high}} \right) &= -0.2393 \end{aligned}$$

- investment wedge of a low-tariff firm pre versus post 2000:

$$\begin{aligned} \left[ \ln \left( I_{adv,post}^{low} \right) - \ln \left( I_{adv,pre}^{low} \right) \right] - \left[ \ln \left( I_{land,post}^{low} \right) - \ln \left( I_{land,pre}^{low} \right) \right] &= 0.0642 \times 1.914 \times (0.6 - 0.0) \\ &\quad - 0.642 \times (0.6 - 0.0) \\ &\Leftrightarrow \\ \ln \left( \frac{I_{adv,post}^{low} / I_{adv,pre}^{low}}{I_{land,post}^{low} / I_{land,pre}^{low}} \right) &= -0.3115 \end{aligned}$$

- relative difference in the investment wedge across both firms:

$$\begin{aligned}
& \left[ \ln \left( I_{adv,post}^{high} \right) - \ln \left( I_{adv,pre}^{high} \right) \right] - \left[ \ln \left( I_{land,post}^{high} \right) - \ln \left( I_{land,pre}^{high} \right) \right] \\
& - \left[ \ln \left( I_{adv,post}^{low} \right) - \ln \left( I_{adv,pre}^{low} \right) \right] - \left[ \ln \left( I_{land,post}^{low} \right) - \ln \left( I_{land,pre}^{low} \right) \right] = -0.2393 - (-0.3115) \\
& \Leftrightarrow \\
& \frac{I_{adv,post}^{high}/I_{adv,pre}^{high}}{I_{land,post}^{high}/I_{land,pre}^{high}} / \frac{I_{adv,post}^{low}/I_{adv,pre}^{low}}{I_{land,post}^{low}/I_{land,pre}^{low}} = 1.07487
\end{aligned}$$

## Removing Selected Industries

In order to assess if our results are robust to the exclusion of those industries that are responsible for the pre-treatment dip in the year 2000 and the post-treatment dip in the year 2004, we replicate Figure 4 and Table 3 after excluding the industries Cigarettes (211), Dairy Products (202), Service Industry Machinery (358) and Rubber & Plastics Footwear (302). Figure 10 is the analogue to Figure 4 and depicts our predicted pattern but without the discussed coefficient dips. Testing the null hypothesis that the coefficients pre-WTO (years 1997 - 2000) are identical to the post-WTO (years 2001 - 2004) can be rejected ( $p$ -Value 0.0418 for ordering and 0.0513 for depreciation rates). Table 14 presents our baseline results when the four industries are excluded and is thus the analogue to Table 3. The coefficient size remains comparable and even increases slightly for some specifications Standard errors slightly increase but remain significant at standard significance levels with the exception of specification (3) in Panel A.

Figure 9: Demand Elasticity and Productivity Differences

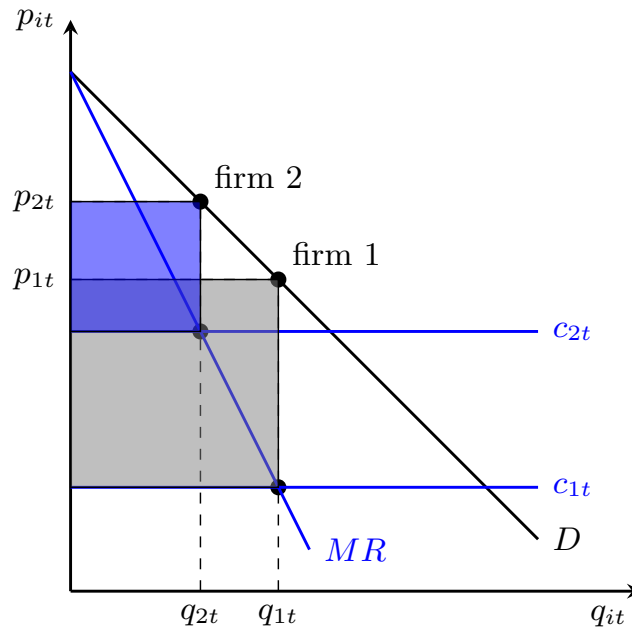
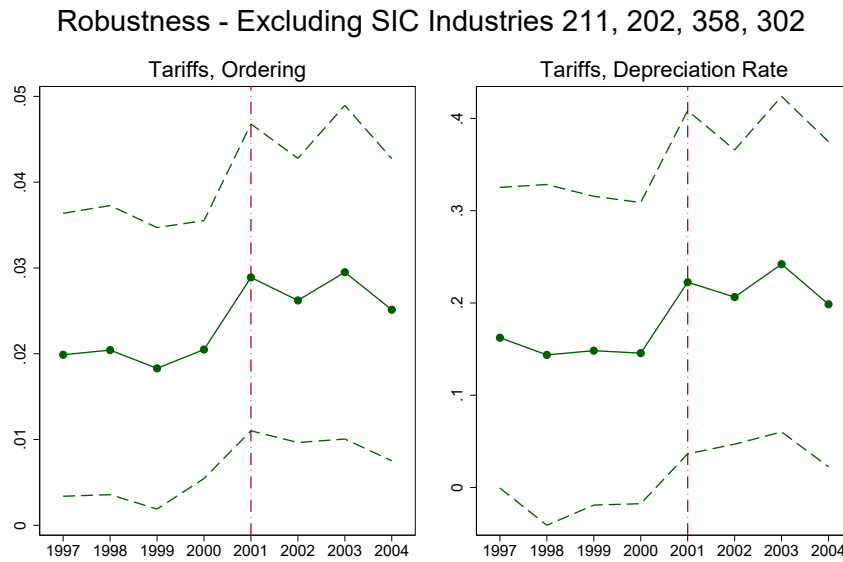


Figure 10: The Impact of the Chinese WTO Accession on the Durability of Investments - Robustness



Notes: The Figure replicates Figure 4 after excluding the SIC industries 211, 202, 358, 302 from the sample.

**Table 14: Exploiting Sectoral Differences in Pre-WTO Tariff Rates - Robustness**

Dependent Variable: log(Investment)						
	(1)	(2)	(3)	(4)	(5)	(6)
<b>Panel A: Measure of Depreciation: Ordering</b>						
Post2000 * Pre-WTO-Tariff * Depreciation	0.00868** (0.00376)	0.00999** (0.00396)	0.00712 (0.00439)	0.00905** (0.00390)	0.0107** (0.00413)	0.00884** (0.00429)
Pre-WTO-Tariff * Depreciation	0.00196 (0.00893)	0.00110 (0.00871)	0.0179** (0.00789)	0.00171 (0.00929)	0.000712 (0.00899)	0.0179** (0.00778)
Post2000 * Depreciation	-0.0275* (0.0141)			-0.0440*** (0.0148)		
<b>Panel B: Measure of Depreciation: Depreciation Rate</b>						
Post2000 * Pre-WTO-Tariff * Depreciation	0.0848** (0.0376)	0.0880** (0.0379)	0.0709* (0.0401)	0.0870** (0.0400)	0.0908** (0.0399)	0.0772* (0.0396)
Pre-WTO-Tariff * Depreciation	0.0895 (0.0775)	0.0873 (0.0765)	0.117 (0.0854)	0.0961 (0.0787)	0.0937 (0.0774)	0.132 (0.0827)
Post2000 * Depreciation	-0.484*** (0.143)			-0.705*** (0.156)		
Industry Controls * Depreciation	no	no	yes	no	no	yes
Category FE	yes	no	no	yes	no	no
Category-Year FE	no	yes	yes	no	yes	yes
Firm-Year FE	yes	yes	yes	yes	yes	yes
Observations	17,912	17,911	17,657	30,284	30,282	29,850
No. Firms	2,296	2,296	2,261	2,641	2,641	2,601
Sample Time	2000 - 2002	2000 - 2002	2000 - 2002	1999 - 2003	1999 - 2003	1999 - 2003

*Notes:* The Table replicates Table 3 after excluding the SIC industries 211, 202, 358, 302 from the sample.